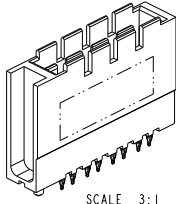


10091830 - X X X X X L F

LEAD-FREE DESIGNATION ADDED ONLY WHEN APPLICABLE



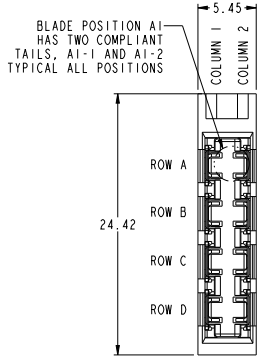
SCALE 3:1

PLATING CODE	
I	SEPARABLE INTERFACE: PERFORMANCE-BASED PLATING, TELCORDIA CO (SEE NOTE 2) PRESS-FIT TAILS: TIN OR TIN-LEAD BASED ON LEAD-FREE "LF" SUFFIX
5	SEPARABLE INTERFACE: PERFORMANCE-BASED PLATING, TELCORDIA UE (SEE NOTE 2) PRESS-FIT TAIL: TIN OR TIN-LEAD ON BASED ON LEAD-FREE "LF" SUFFIX
D	SEPARABLE INTERFACE: CUSTOMER SPECIFIC PLATING PRESS-FIT TAIL: TIN OR TIN-LEAD ON BASED ON LEAD-FREE "LF" SUFFIX
E	SEPARABLE INTERFACE: CUSTOMER SPECIFIC PLATING PRESS-FIT TAIL: TIN OR TIN-LEAD ON BASED ON LEAD-FREE "LF" SUFFIX

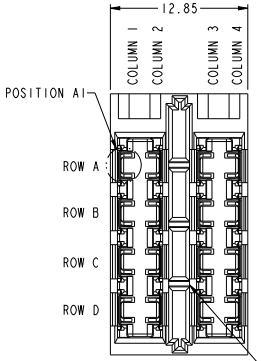
NUMBER OF POWER SLOTS	
1	ONE POWER SLOT ("1-UP" MODULE)
2	TWO POWER SLOTS ("2-UP" MODULE)
3	THREE POWER SLOTS ("3-UP" MODULE)

SEQUENTIALLY ASSIGNED FOR CUSTOM LOADING CONFIGURATIONS (SEE TABLE, SHEET 5)
"00" FOR STANDARD LOADING (UNIFORM CONTACT LENGTH, ALL POSITIONS)

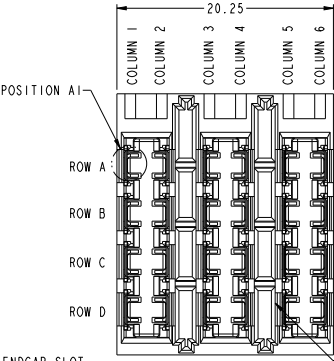
CONTACT WIPE LENGTH	
0	CUSTOM LOADED CONTACTS
1	4.5mm ALL CONTACTS
2	6.0mm ALL CONTACTS
3	7.5mm ALL CONTACTS



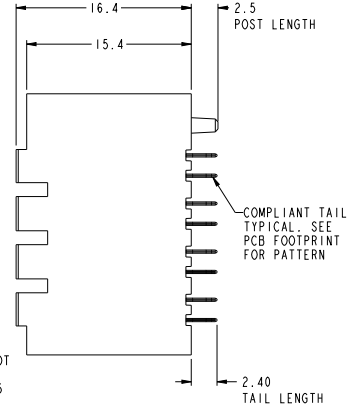
1-SLOT POWER MODULE MATING-FACE VIEW
SCALE 4:1



2-SLOT POWER MODULE MATING-FACE VIEW
SCALE 4:1

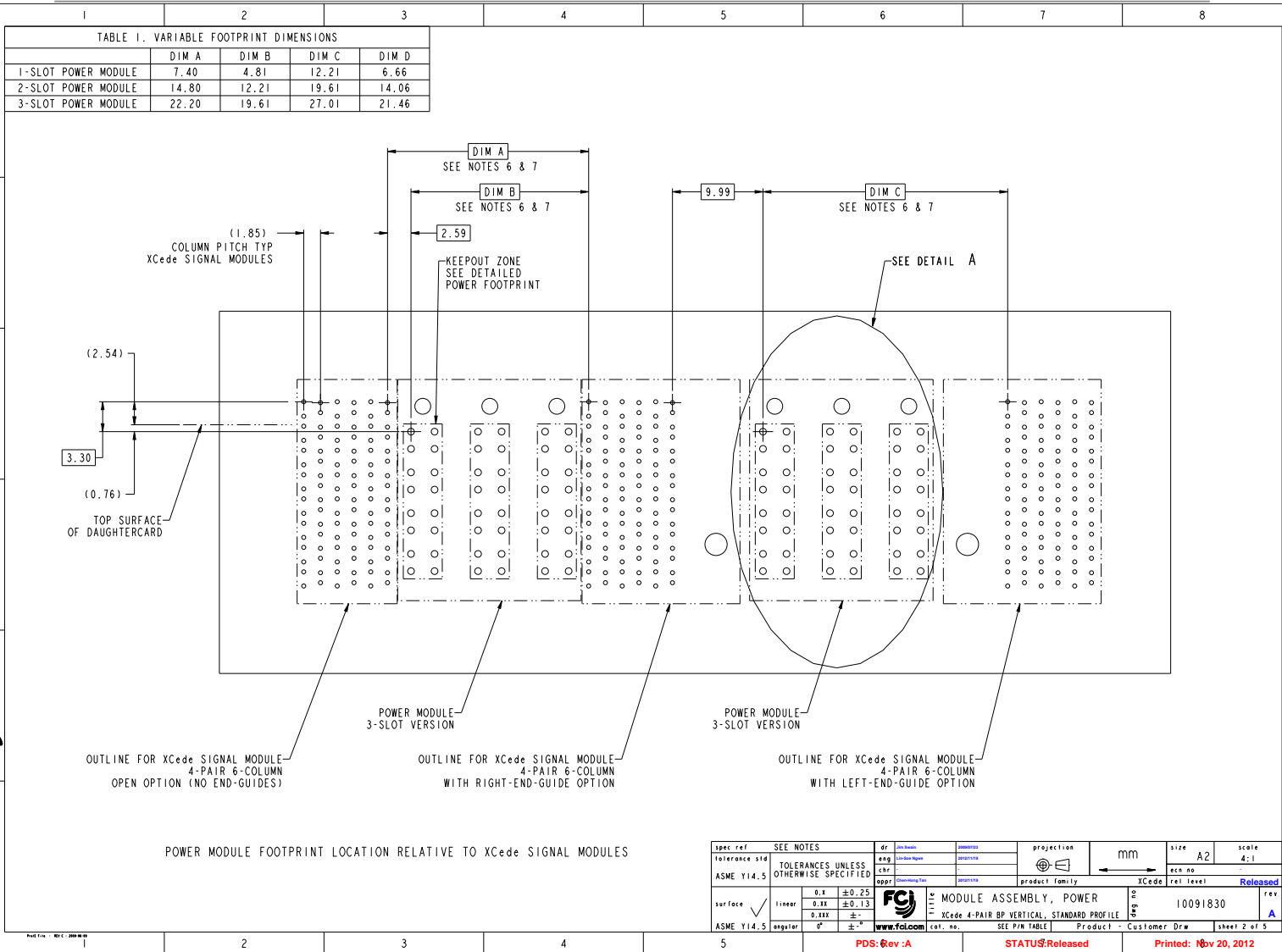


3-SLOT POWER MODULE MATING-FACE VIEW
SCALE 4:1

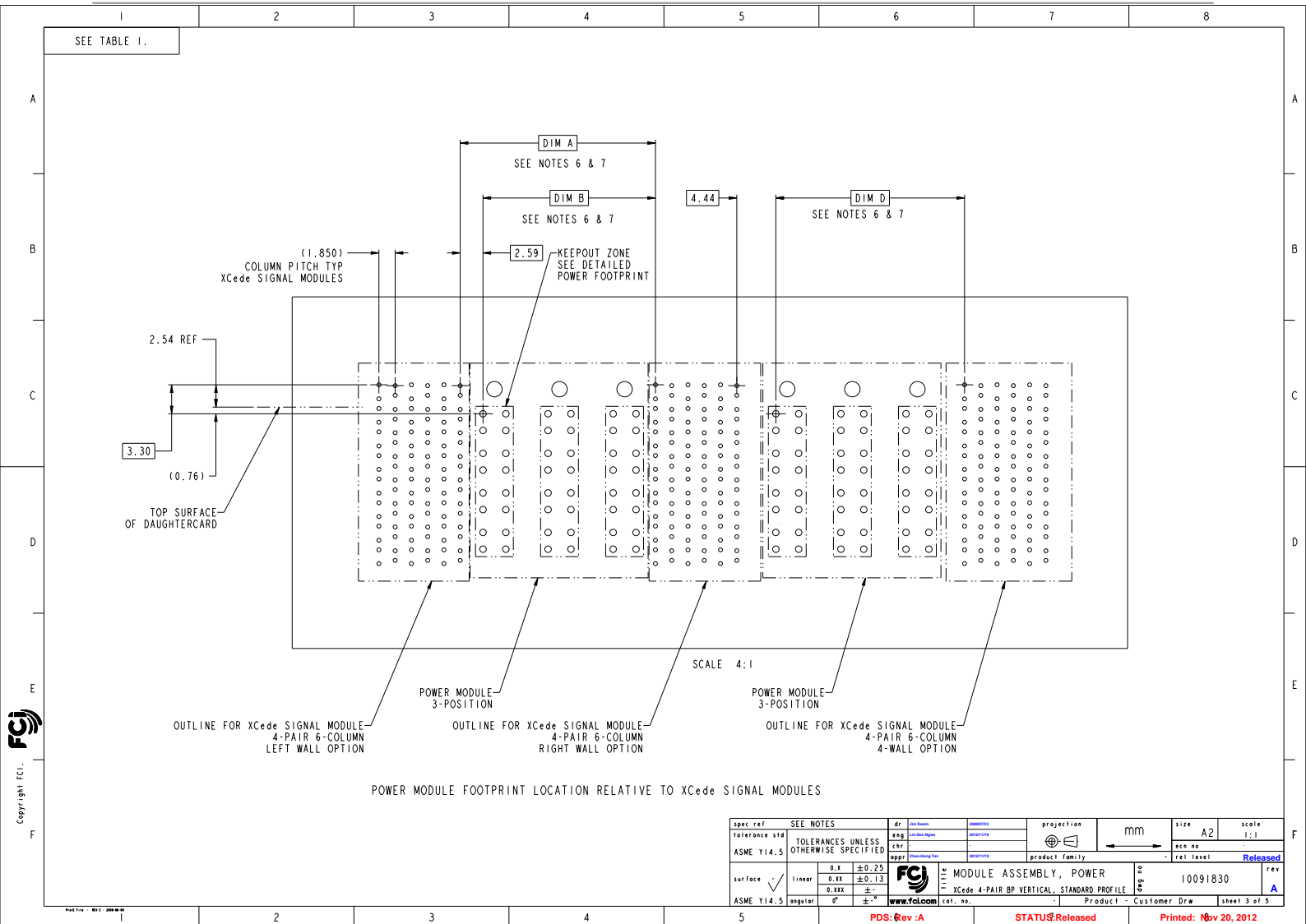


Copyright FCI

spec ref	SEE NOTES	dr	eng	proj	mm	size	scale
ASME Y14.5	TOLERANCES UNLESS OTHERWISE SPECIFIED	www.fci.com	0.25	XCede 4-PAIR BP VERTICAL, STANDARD PROFILE	mm	A2	4:1
surface	linear	0.1	±0.25	0.1X	±0.13	0.1XX	±
ASME Y14.5	angular	0°	±	0°	±		

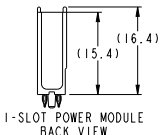
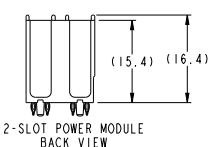
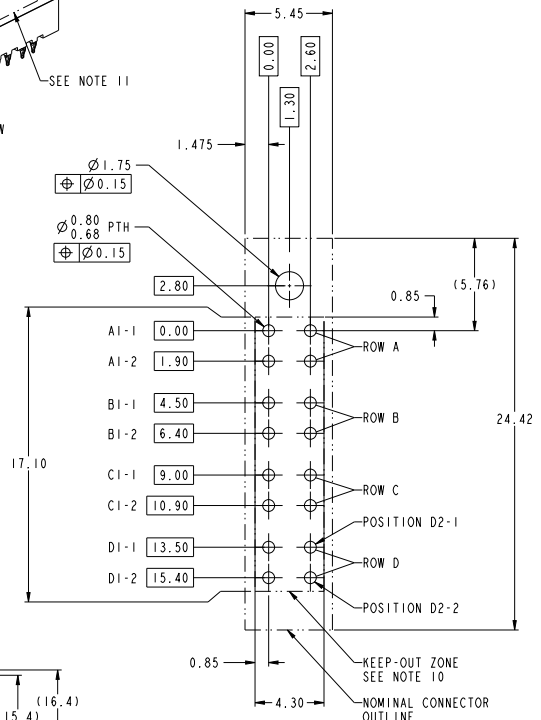
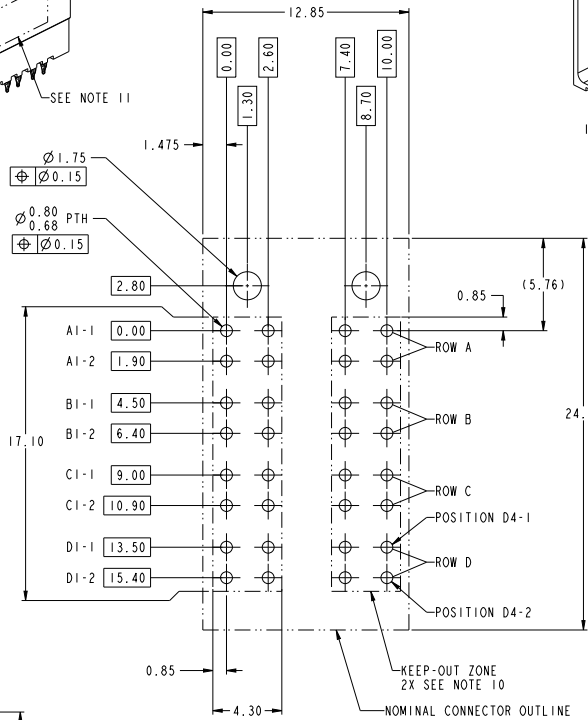
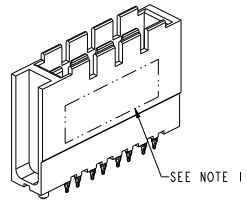
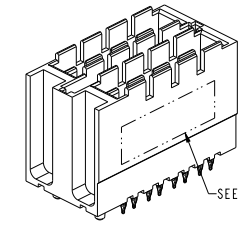


spec ref	SEE NOTES	dr	www.fci.com	projection	mm	size	A2	scale	4:1
tolerance std	ASME Y14.5	eng	chr	product family	XCede	rel level	Released	ecr no	
surface	linear	0.x	±0.25	angular	0.xx	±0.13	0.xxx	±	
ASME Y14.5		www.fci.com		MODULE ASSEMBLY, POWER		XCede 4-PAIR BP VERTICAL, STANDARD PROFILE		10091830	
				Product - Customer Drw		sheet 2 of 3			



spec ref	SEE NOTES	dr	www.fci.com	projection	mm	size	A2	scale	1:1
tolerance std	TOLERANCES UNLESS OTHERWISE SPECIFIED	eng	www.fci.com	chr	mm	ecc no		rel level	Released
ASME Y14.5		app	www.fci.com	product family		rel level			
surface	linear	0.x	±0.25		MODULE ASSEMBLY, POWER		10091830	A	rev
		0.xx	±0.13		XCode 4-PAIR BP VERTICAL, STANDARD PROFILE				
ASME Y14.5	angular	0°	±°		Product - Customer Draw				
		PDS: Rev :A		STATUS: Released		Printed: Nov 20, 2012			

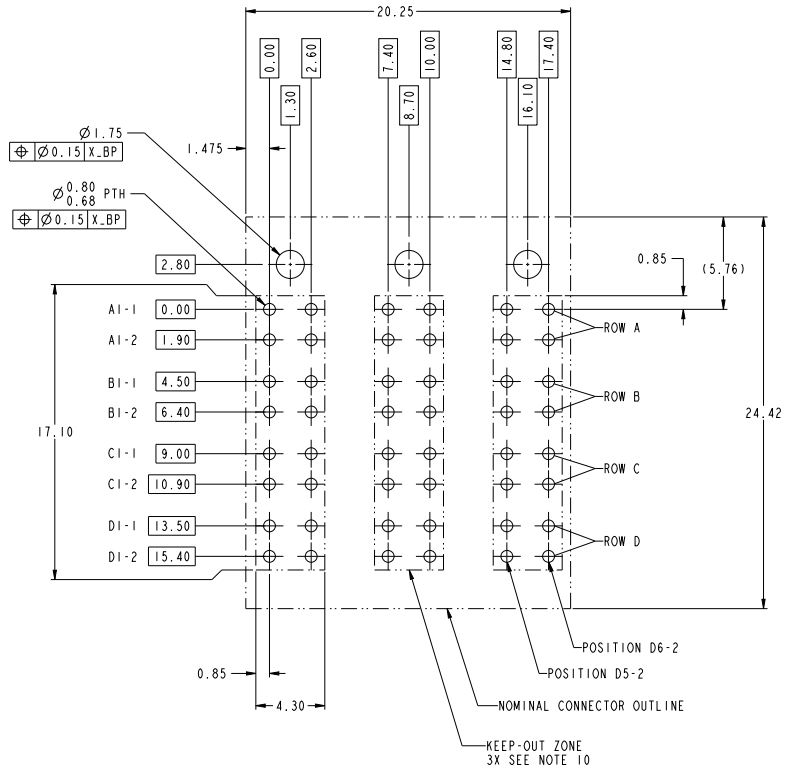
Copyright FCI



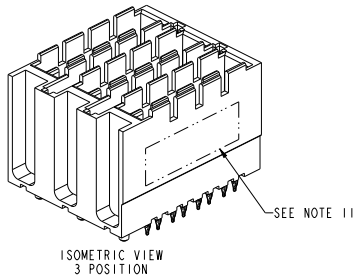
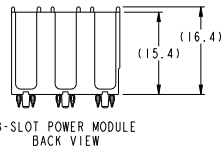
spec ref	SEE NOTES	dr	see below	revision	projection	mm	size	A2	scale	4:1
tolerance std	ASME Y14.5	eng	John Ng	date	12/11/12	product family	XCede rel level	Released		
surface	linear	0.x	±0.25	0.xx	±0.13	0.xxx	±			
ASME Y14.5	angular	°	±							

NOTES:

1. CONNECTOR MATERIALS:
HOUSING: HIGH-TEMP THERMOPLASTIC, BLACK, UL94V-0
CONTACTS: HIGH PERFORMANCE COPPER ALLOY
2. CONTACT PLATING:
SEPARABLE INTERFACE:
PERFORMANCE -BASED PLATING,QUALIFIED TO MEET THE REQUIREMENTS OF FCI PRODUCT SPECIFICATION GS-12-0989, INCLUDING TELCORDIA GR-1217-CORE (NOVEMBER 1995) CENTRAL OFFICE TEST SEQUENCE.
PRESS FIT TAILS: TIN OR TIN-LEAD ON TAILS, NICKEL UNDERPLATE
3. EACH POWER CONTACT BLADE HAS TWO COMPLIANT PINS
4. THE MODULES SHOWN ON THIS DRAWING MATE WITH FCI DAUGHTERCARD POWER MODULE P/N 10091828-XXX
5. "2-SLOT" AND "3-SLOT" MODULES WILL ACCEPT DC ENDCAPS BETWEEN DC POWER MODULES WITH NO ADDITIONAL SPACE REQUIREMENTS.
6. WHEN USING ENDCAPS BETWEEN SIGNAL WAFERS AND DC POWER MODULES, ADD 1.85mm BETWEEN MODULES FOR EACH ENDCAP
7. FOR EACH ADDITIONAL POWER MODULE, ADD 5.55mm FOR "1-SLOT" MODULES, 12.95mm FOR "2-SLOT" MODULES, AND 20.35mm FOR "3-SLOT" MODULES.
8. PRODUCT SPECIFICATION: GS-12-0989
9. APPLICATION SPECIFICATION: GS-20-0342
10. NO SURFACE TRACES IN KEEP-OUT ZONE
11. PART MARKING, (PART NUMBER, LOT CODE), ON THIS SURFACE.
12. LEAD-FREE PRODUCT MEETS THE EUROPEAN UNION DIRECTIVES AND OTHER COUNTRY REGULATIONS AS DESCRIBED IN FCI SPECIFICATION GS-22-008.
13. PACKAGING MEETS FCI SPECIFICATION GS-14-920 FOR LEAD FREE LABELLING.
14. A Δ SYMBOL WILL BE NEXT TO ANY DIMENSION, VIEW OR NOTE WHICH HAS BEEN MODIFIED WITH THE CURRENT DRAWING REVISION.



DETAIL A
3-SLOT POWER MODULE FOOTPRINT
SCALE 6:1



spec ref	SEE NOTES	dr	www.fci.com	projection	mm	size	A2	scale	4:1
tolerance std	ASME Y14.5	tolerances unless otherwise specified	eng	chr	product family	XCede	rel level	Released	rev
surface	linear	0.x ±0.25 0.xx ±0.13 0.xxx ±	angular	0°	www.fci.com	col. no.	SEE P/N TABLE	Product - Customer Drw	sheet 5 of 5

PDS: Rev :A

STATUS: Released

Printed: Nov 20, 2012