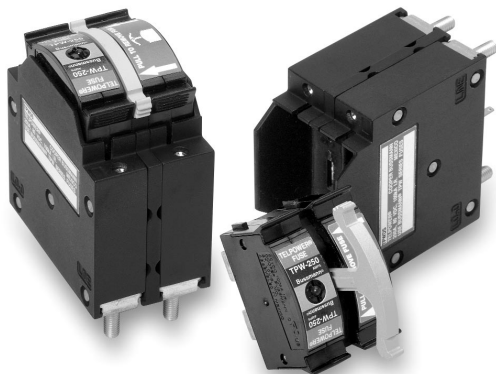


Telpower® DC Power Protection Systems

Bussmann®

Telpower® Double - Wide Fused Disconnect Switch TPW & TPWDS



TPW & TPWDS

TPWDS - Telpower® Double - Wide Fused Disconnect Switch

TPW - Telpower® Double - Wide Fuse - Current Limiting

Ampere Ratings: 150 -250A

Available Ratings: 150, 175, 200, 225, 250A

Voltage Rating: 80Vdc

Interrupting Rating: 100,000A

Planned Submittal for Agency Recognition:

UL Recognition (investigated to UL 1801) as a disconnect switch for the interruption of load current by means of withdrawing the fuse pullout. Recognition to U.S. and Canadian requirements under the component recognition program of Underwriters Laboratories Inc. Patents Pending

General Information:

- Fusible solution for replacement of existing dc Telecom circuit breakers.
- Similar profile and mounting method as Telpower® TPC Compact fuse and TPCDS Compact Fused Disconnect Switch.
- TPW fuse handle provides for easy fuse extraction.
- AmpColor ID™ System for easy fuse replacement.
- Available in a variety of terminal styles.
- Local and remote open fuse indication.
Local alarm indication provided by LED on TPW fuse*.
- Remote alarm terminal available in three positions commonly found in dc circuit protection devices.
- Recommended 1.50 inch center-to-center product spacing.
- Current-limiting capability
- Complete system coordination capability.
- High interrupting rating (100,000A)
- Custom load bus available. Please consult with Bussmann.
- No venting of arc or molten metals and gases during fuse opening.
- Fuse material: Thermoplastic, UL rated 94 V-O, 170° C RTI.
- Housing material: Thermoplastic, UL rated 94 V-O, 120° C RTI.

* TPWDS alarm circuit schematic and description identical to TPCDS. Reference TPCDS datasheet 5023.

Catalog Number	Description	Ampere Rating
TPW-150	Double - Wide Fuse	150A
TPW-175	Double - Wide Fuse	175A
TPW-200	Double - Wide Fuse	200A
TPW-225	Double - Wide Fuse	225A
TPW-250	Double - Wide Fuse	250A
TPWDS-BBE-1	Double - Wide Disconnect	150 - 250A
TPWDS-BBE-2	Double - Wide Disconnect	150 - 250A
TPWDS-BBE-3	Double - Wide Disconnect	150 - 250A
TPWDS-BBM-1	Double - Wide Disconnect	150 - 250A
TPWDS-BBM-2	Double - Wide Disconnect	150 - 250A
TPWDS-BBM-3	Double - Wide Disconnect	150 - 250A
TPWDS-BSE-1	Double - Wide Disconnect	150 - 250A
TPWDS-BSE-2	Double - Wide Disconnect	150 - 250A
TPWDS-BSE-3	Double - Wide Disconnect	150 - 250A
TPWDS-BSM-1	Double - Wide Disconnect	150 - 250A
TPWDS-BSM-2	Double - Wide Disconnect	150 - 250A
TPWDS-BSM-3	Double - Wide Disconnect	150 - 250A
TPWDS-SSE-1	Double - Wide Disconnect	150 - 250A
TPWDS-SSE-2	Double - Wide Disconnect	150 - 250A
TPWDS-SSE-3	Double - Wide Disconnect	150 - 250A
TPWDS-SSM-1	Double - Wide Disconnect	150 - 250A
TPWDS-SSM-2	Double - Wide Disconnect	150 - 250A
TPWDS-SSM-3	Double - Wide Disconnect	150 - 250A

Part Number System --

Double - Wide Fused Disconnect Switch

To identify part number, replace block with appropriate suffix to identify line and load terminals, thread type, and alarm terminal distance.

TPWDS - TELPOWER®

Double - Wide Fused Disconnect Switch



Terminal Style (select one)

- BB - Bullet contact on the line
Bullet contact on the load
- BS - Bullet contact on the line
Stud terminal on the load
- SS - Stud terminal on the line
Stud terminal on the load

Thread (select one)

- M - Metric threads for panel mount fasteners (M3) and stud (M5)
- E - English threads for panel mount fasteners (6-32) and stud (10-32)

Remote Alarm Terminal Distance (select one)

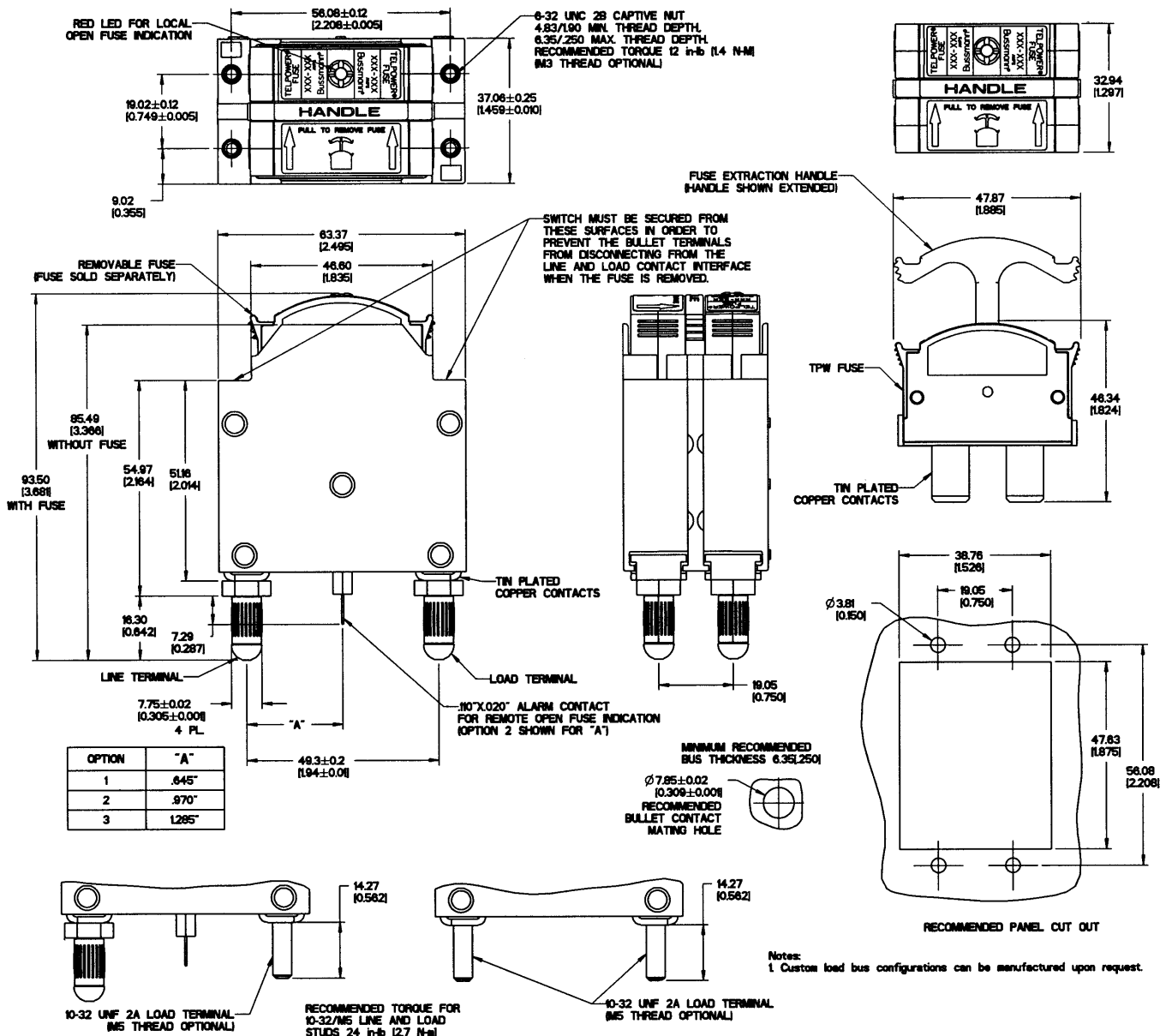
- 1 - .645 inch from line terminal
- 2 - .970 inch from line terminal
- 3 - 1.285 inch from line terminal

Telpower® DC Power Protection Systems

Bussmann®

Telpower® Double-Wide Fused Disconnect Switch TPW & TPWDS

TPWDS Terminal Styles
Double - Wide Fused Disconnect Switch



The only controlled copy of this Data Sheet is the electronic read-only version located on the Bussmann Network Drive. All other copies of this document are by definition uncontrolled. This bulletin is intended to clearly present comprehensive product data and provide technical information that will help the end user with design applications. Bussmann reserves the right, without notice, to change design or construction of any products and to discontinue or limit distribution of any products. Bussmann also reserves the right to change or update, without notice, any technical information contained in this bulletin. Once a product has been selected, it should be tested by the user in all possible applications.