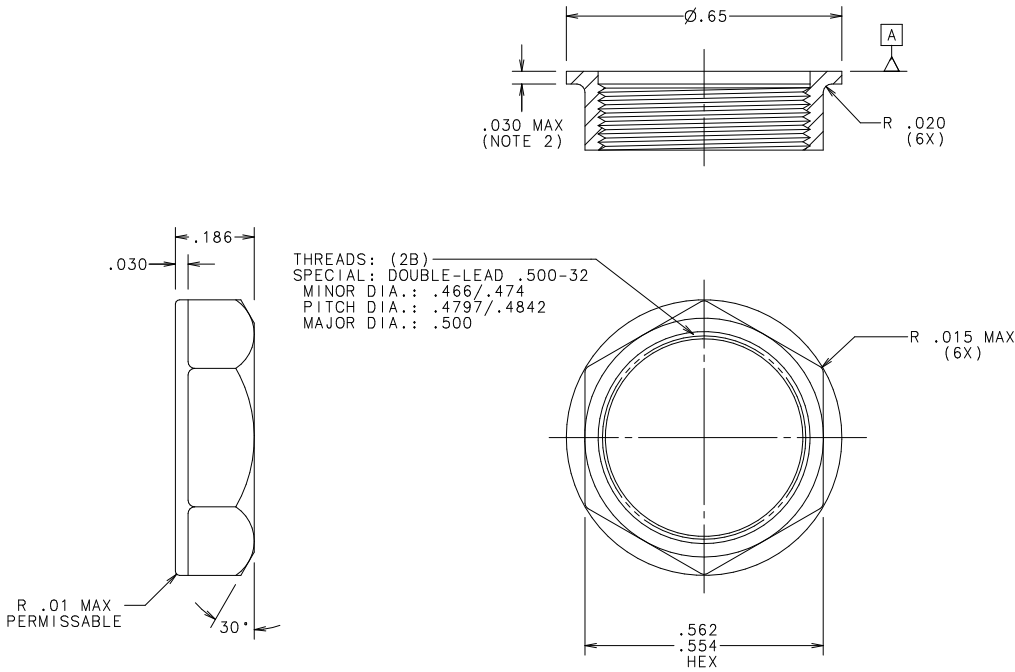


CAD GENERATED DRAWING - NO PENCIL CHANGES ALLOWED



NOTES:

1. NUT IS TO ACCEPT A TORQUE OF 18 LB.-IN. WITHOUT CRACKING OR STRIPPING
2. THE STARTING POINT OF THE LEAD THREAD CANNOT EXCEED .030 FROM SURFACE [A].
3. "FLASH EXTENDING ABOVE SURFACE [A] CANNOT EXCEED .006 HIGH AND .004 THICK.

PACKAGING NOTES:

PLACE IN TOTE -580599 LINED WITH POLY BAG -890-750  
LABEL TOTE WITH -914-796 PRINTED PER GENERAL LABEL  
SPEC. LS-000003.

UNLESS OTHERWISE SPECIFIED, DIMENSIONS DO NOT INCLUDE PLATING.		
CPK DENOTES CRITICAL CHARACTERISTICS.		
CPK DENOTES CPK DIMENSIONS - MINIMUM CPK VALUE		
CPK DENOTES A CHARACTERISTIC THAT PROVIDES AN INDICATION OF PROCESS PERFORMANCE PROCEDURE FOR MEASUREMENT (SUCH AS DIMENSIONAL INSPECTION) IS REQUIRED FOR THIS PART.		
CPK DENOTES TITLITELFUSE INSPECTION INSTRUCTIONS.		
CPK DENOTES CP DIMENSIONS - MINIMUM CP VALUE (CPK) MUST BE WITHIN THE DIMENSIONAL LIMITATIONS SHOWN ON DRAWING AND INITIALLY LOCATED TO AVOID OR MAXIMUM TOOL LIFE.		
1	057295 RYNITE 415 HP	
NO	COMPONENT NO	
NO	DESCRIPTION	
2.25	QTY/M	
LB	U/M	
BILL OF MATERIAL		
FINISH		
MATERIAL SPEC		
COPIES TO		
1	9 18	
2	10 19	
3	12 20	
4	13 21	
5	14 23	
6	15 33	
7	16 43	
8	17 53	
TOLERANCE UNLESS OTHERWISE SPECIFIED		
TWO PLACE DEC. ±.01 FRACTION ±		
THREE PLACE DEC. ±.005 ANGULAR ±1°		
TITLE		
HEX NUT, MOLDED		
REVISION		
LTR	CHK	APD
K		
39068C-REVISE & REDRAWN IN NEW STRUCTURE 4/16/98 KAM		
L		
39682C-CHG. 0.845 TO .7896 03/22/99 PJM		
M		
80635C-CHG .7896 TO 2.25 06/22/00 PJM		
SCALE 4:1		
DATE 1/23/97		
SUPER DRW		
DATE		
DATE		
DATE		
RAW STK WT		
LBS/M		
DRAWING NO. 903-097		
REVISION M		
Littelfuse		
DES PLAINES, ILLINOIS 60016		

CONTROLLED DOCUMENT