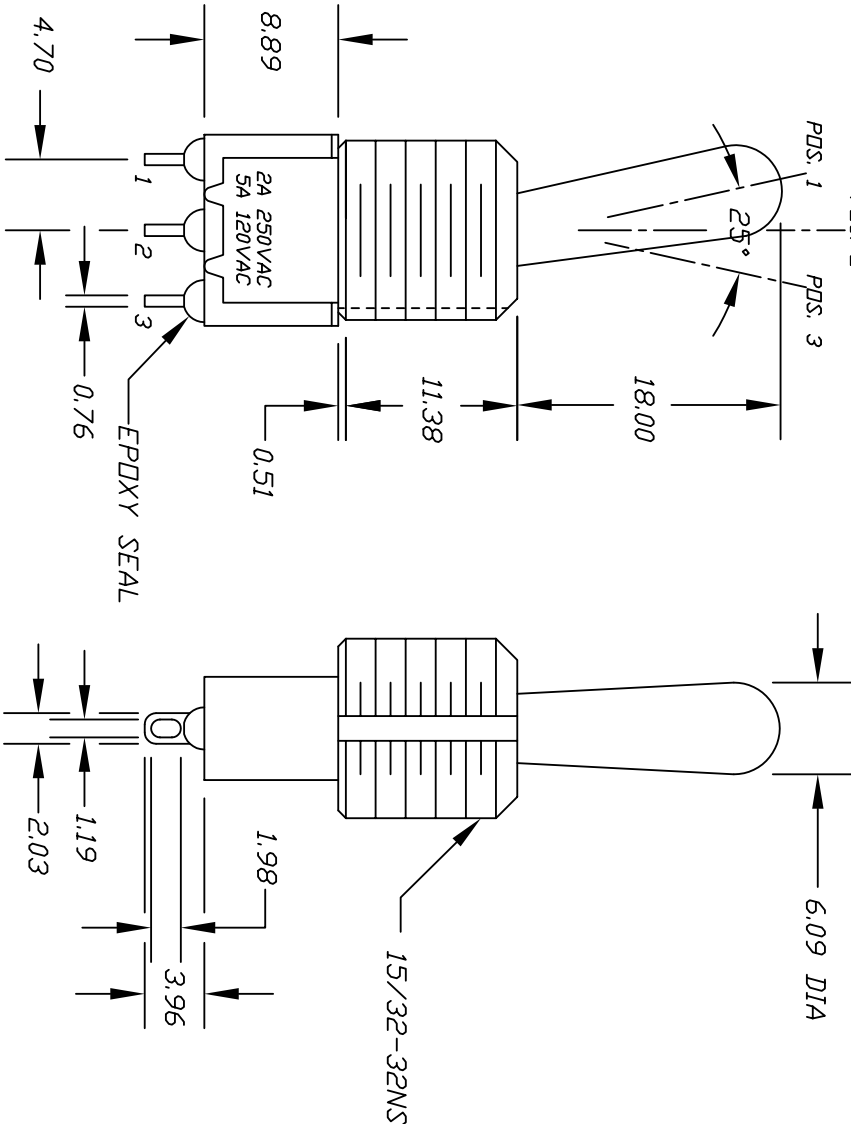
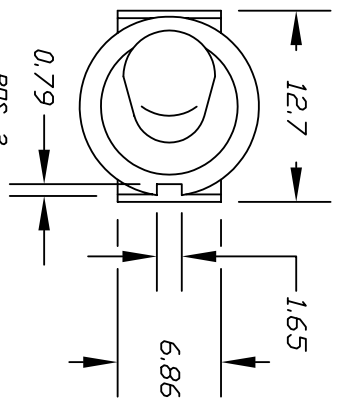


CONTACT CONFIGURATION

SWITCH FUNCTION		
POS. 1	POS. 2	POS. 3
DN	NONE	DN
2-3	OPEN	2-1

NOTES:

1. ALL DIMENSIONS IN MM LINCH
2. TERMINAL NUMBERS FOR REDF ONLY
3. PLATING MATERIAL: SILVER
4. RATING: 5A @ 120VAC OR 28VDC  
2A @ 250VAC
5. ELECTRIC LIFE: 40,000 MAKE-AND-BREAK CYCLES AT FULL LOAD
6. INSULATION RESISTANCE: 1,000 MEGA-OHM MIN.
7. DIELECTRIC STRENGTH: 1,000VRMS @ SEA LEVEL
8. OPERATING TEMP: -30°C TO 85°C
9. ▲ DENOTES CRITICAL PARAMETER
10. 2002/95/EC (ROHS) COMPLIANT
11. HARDWARE TO BE SUPPLIED BULK:  
T100012-LOCK WASHER QTY-1  
T100003-LOCK RING QTY-1  
T100004-HEX NUT QTY-2



REV.	ECN NO.	DESCRIPTION	DATE	CHKD
B	16549	FIXED HARDWARE LIST.	10/19/06	TN
A	15511	RELEASED FOR PRODUCTION	11/8/05	PH

TOLERANCES	
0.0	±0.4
0.00	±0.25

SCALE 2:1 DATE 11/8/05 DR PH DWG ST111027 REV B

TITLE 100 SP1 T8 B13 M1 Q EH

**E-SWITCH**

THE INFORMATION CONTAINED IN THIS DOCUMENT IS PROPRIETARY TO E-SWITCH AND IS NOT TO BE COPIED OR TRANSFERRED