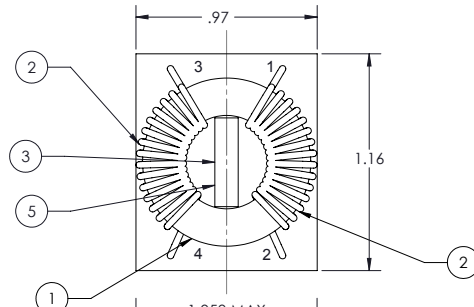


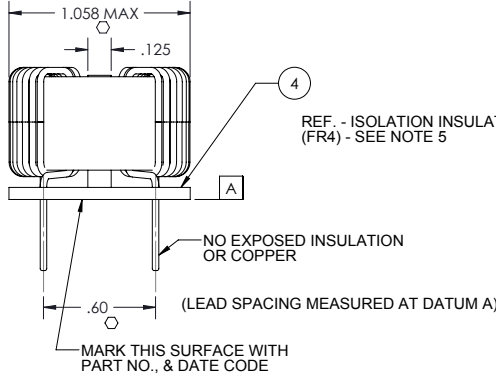
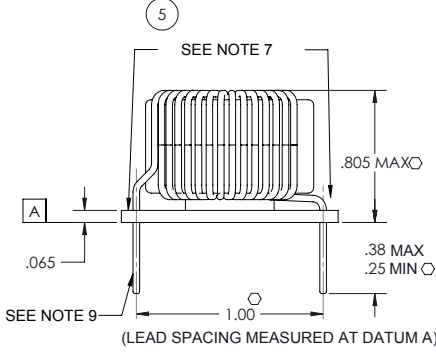
8 7 6 5 4 3 2 1

VICOR CONFIDENTIAL  
THIS DOCUMENT AND THE DATA DISCLOSED HEREIN OR HEREWITH IS NOT TO BE REPRODUCED, USED OR DISCLOSED IN WHOLE OR IN PART TO ANYONE WITHOUT THE PERMISSION OF VICOR CORP.

REVISIONS				
REV	DESCRIPTION	DATE	APPROVED	
1	RELEASED PER E060499	PEI 02/16/06	MB	
2	REVISED PER E063650	PEI 03/13/06	MB	
3	REVISED PER E060905	BW 07/28/06	MB	
4	REVISED PER E072040	JS 09/06/07	SG	
5	REVISED PER E091875	JS 10/20/09	REJH	
6	REVISED PER E092163	GCK 12/04/09	MH	
7	REVISED PER E101309	KUK 10/22/10	AR	



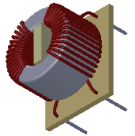
REF: ISOLATION INSULATOR (FR4) SEE NOTES 5 & 7



REF. - ISOLATION INSULATOR (FR4) - SEE NOTE 5

WIRE GAUGE TABLE

PN#	WIRE GAUGE	PIN DIAMETER AFTER TINNING (+/- .003")
31741	#21	0.030"
31742	#19	0.036"
31743	#16	0.051"
31744	#16	0.051"



- NOTES:
- ASSEMBLY TO BE FREE OF NICKS.
  - WINDINGS TO BE EVENLY SPACED.
  - RoHS COMPLIANT. LEAD FREE PER CST-0001 LATEST REVISION.
  - GENERAL WORKMANSHIP STANDARDS FOR MAGNETIC COMPONENTS PER WS-0002.
  - ITEMS 3 & 4 SUPPLIED BY VENDOR AT ASSEMBLY.
  - ALL PARTS FLAME RATED MIN U.L. 94V-0.
  - APPLY ADHESIVE (ITEM 5) TO THE BASE OF ISOLATION INSULATOR (ITEM 3) AND TO ALL LEADS ON THE TOP SURFACE OF THE BOARD.
  - DENOTES CRITICAL CHARACTERISTIC FOR LOT INSPECTION.
  - SEE TABLE FOR WIRE GAUGE DIMENSIONS.
  - LEADS MAY BE TINNED WITH SN96/AG4 OR SAC305 (SN 96.5, AG 3.0, CU 0.5) OR VICOR APPROVED EQUIVALENT.
  - DIMENSIONS ARE INCHES ONLY.

DRAWN		DATE		VICOR		SWD	
P.E.IENI		11/02/05					
MATERIAL		UNLESS OTHERWISE SPECIFIED DIMENSIONS ARE INCH (MM)				IND TOR 1.03 DIA 2W ASSY DWG	
SEE NOTES		TOLERANCES ARE: DECIMALS ANGLES X.XX (X.X) = ±0.01 (0.25) ±1° X.XXX (X.XXX) = ±0.005 (0.127)					
FINISH		THIRD ANGLE PROJECTION		SIZE	CAGE CODE	DWG NO	REV
SEE NOTES				B	67131	31895	7
				SCALE 2 : 1		SHEET 1 OF 1	

8 7 6 5 4 3 2 1