



## PRODUCT DATASHEET

### Lisa2 series

last update 18/8/2014

## DETAILS

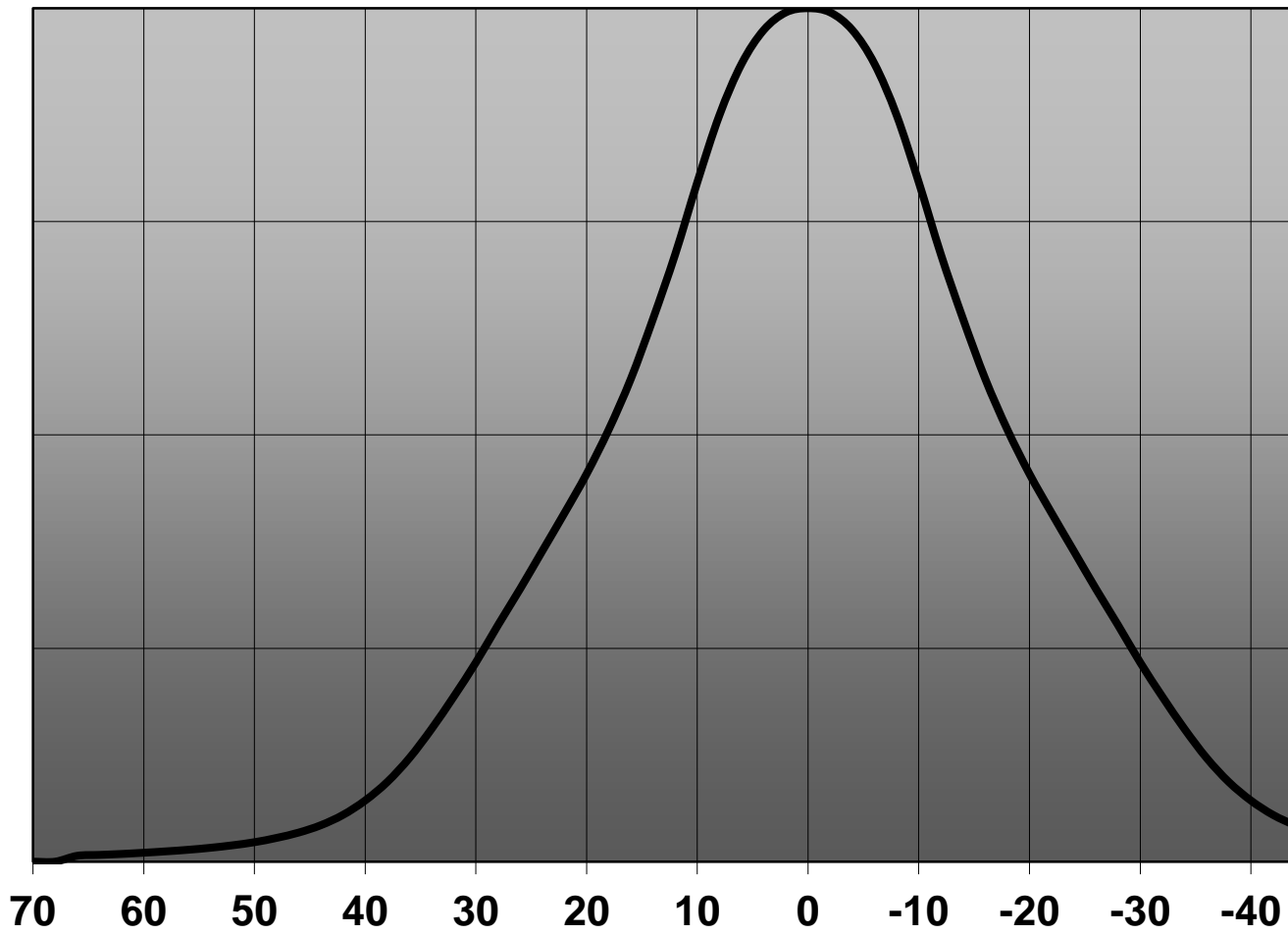
Product Number	FP13026_LISA2-WW-PIN
Family	Lisa2
Type	Assembly
Color	black
Diameter	9.9 mm
Height	6.8 mm
Style	round
Optic Material	PMMA
Holder Material	PC
Fastening	pin, glue
Status	ready
ROHS Compliant	Yes
Date Updated	3/10/2013



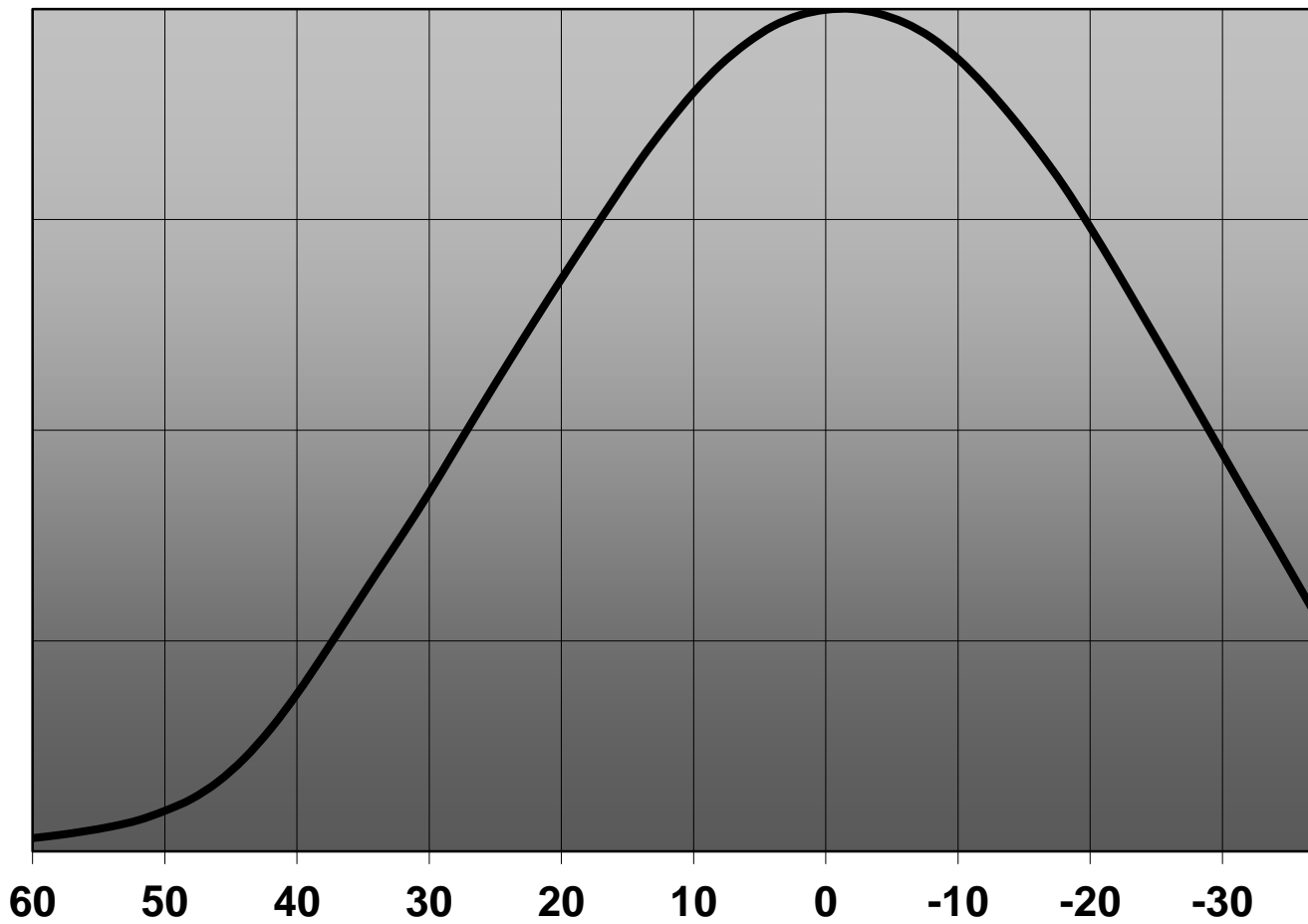
## OPTICAL PROPERTIES

LED	Viewing Angle	Light Beam	Efficiency	cd/lm	connector
LUXEON Q	(simulated) 54		(simulated) 84 %	(simulated) 1.000	-
SFH 4715S (IR)	36 degrees		-	(simulated) 0.000	-
NCSxx19B	41 degrees		86 %	1.500	-
XP-E2	43 degrees		88 %	1.350	-
XP-G2	47 degrees		88 %	1.200	-
XT-E	47 degrees		84 %	1.100	-
LH351B	56 degrees		88 %	1.020	-
LH351Z	60 degrees		90 %	0.950	-

### Relative intensity of FP13029&FP13026\_LISA



### Relative intensity of FP13026\_LISA2-WW-PIN (LH3



D

C

B

A

4

3

2

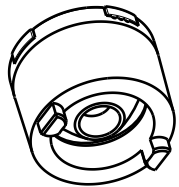
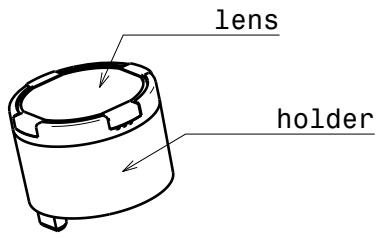
1

4

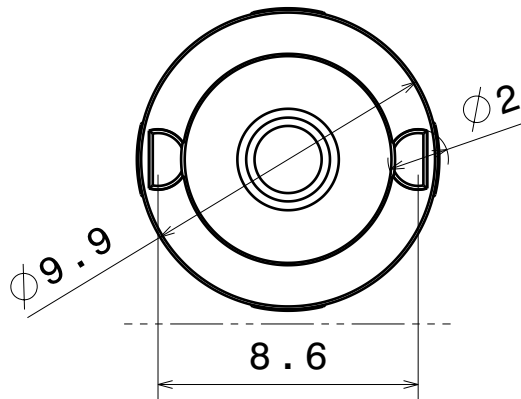
3

2

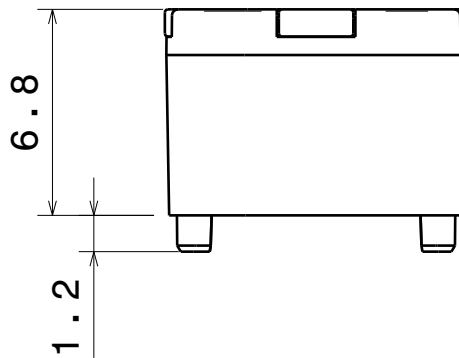
1



Isometric view  
Scale: 2:1



Bottom view



Front view

Materials:  
Lens PMMA  
Holder PC

This drawing is our property.  
It can't be reproduced  
or communicated without  
our written agreement.



Ledil Oy  
Salorankatu 10  
FIN-24240 SALO  
Finland

DRAWING TITLE

Datasheet Lisa2-Pin-XT Series Assy

DRAWN BY  
pl

DATE  
20.06.2012

CHECKED BY

DATE

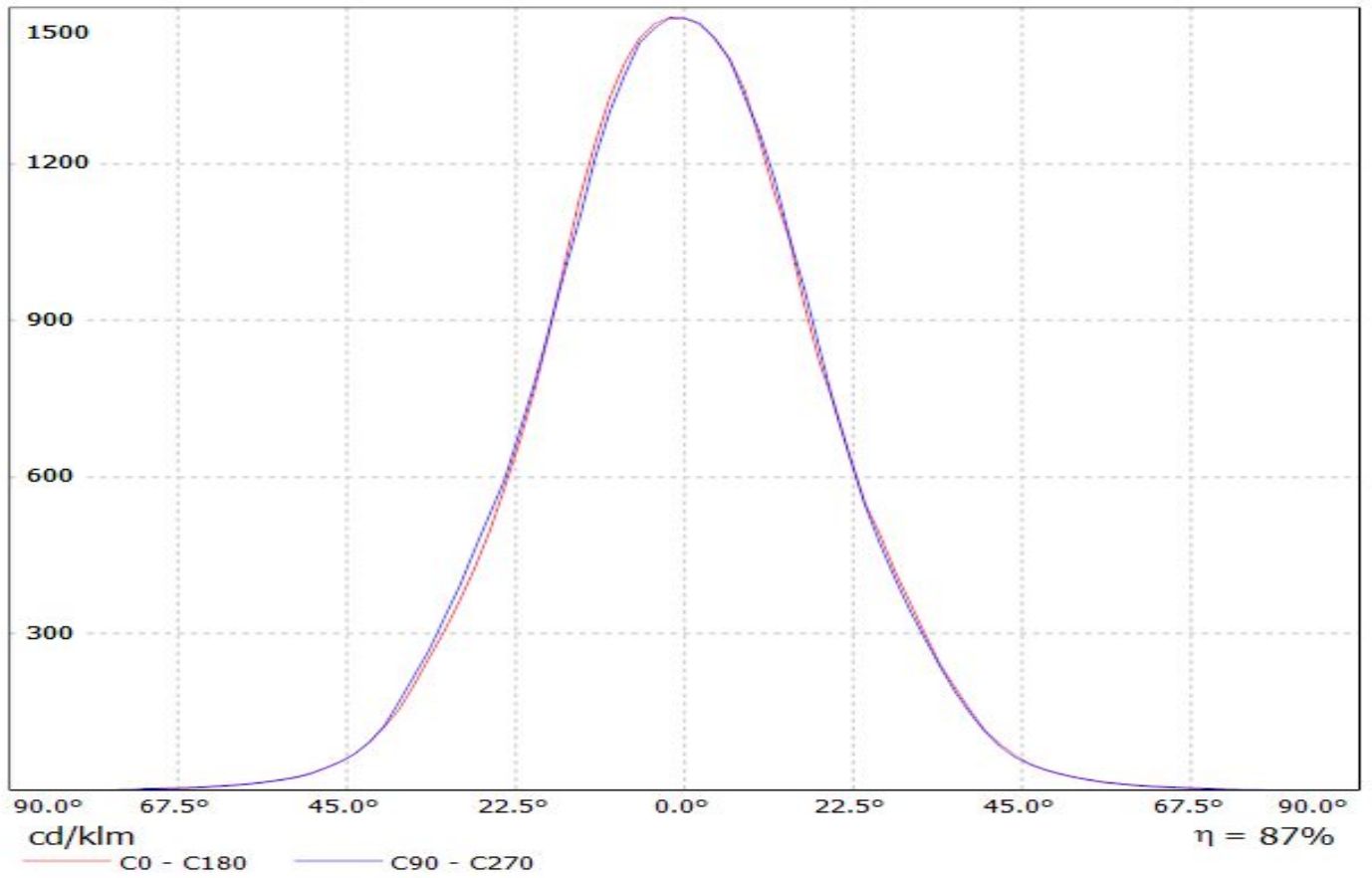
SIZE  
A4

DRAWING NUMBER

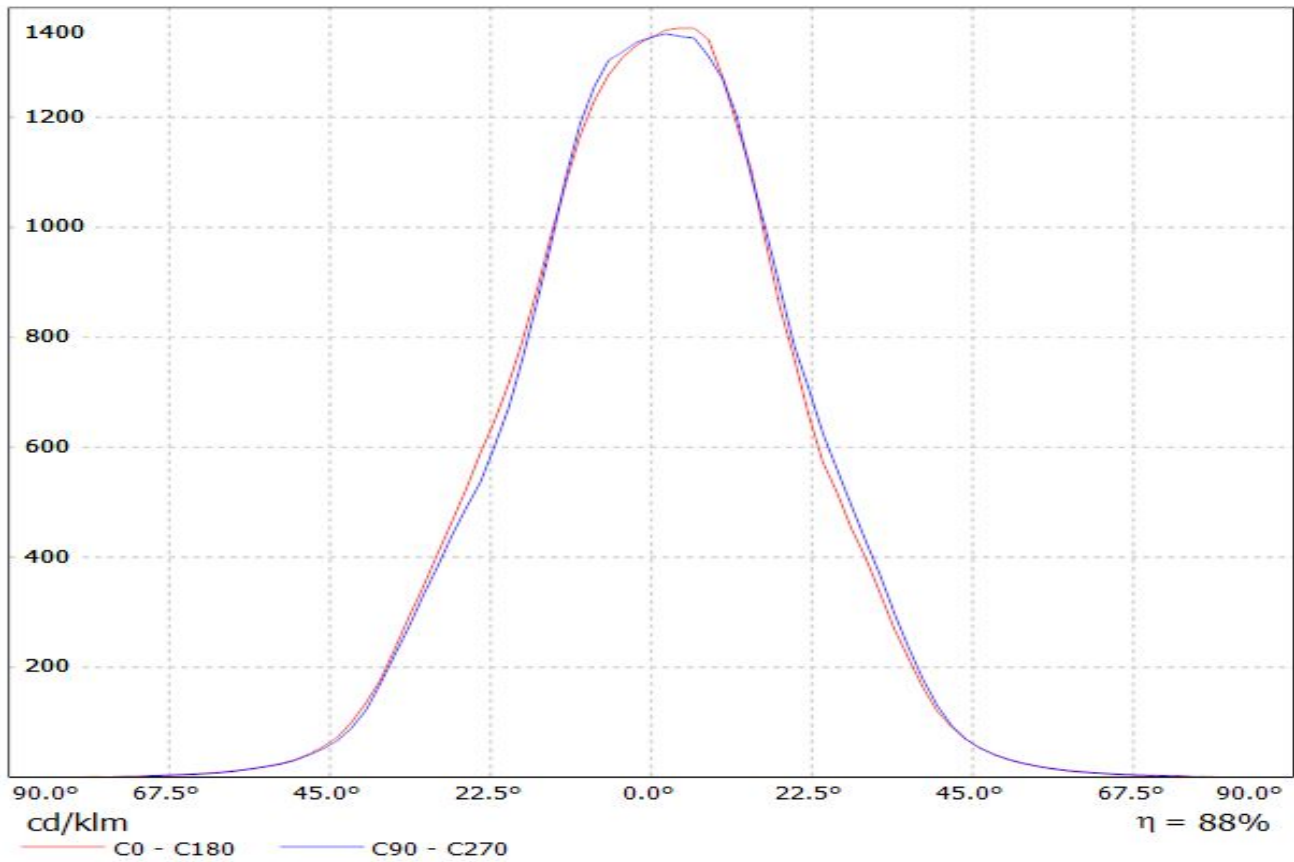
REV  
1

Luminaire: Ledil Oy FP13026&FP13029\_LISA2-WW-PIN\_(NCSxx19B) Eff. 86%

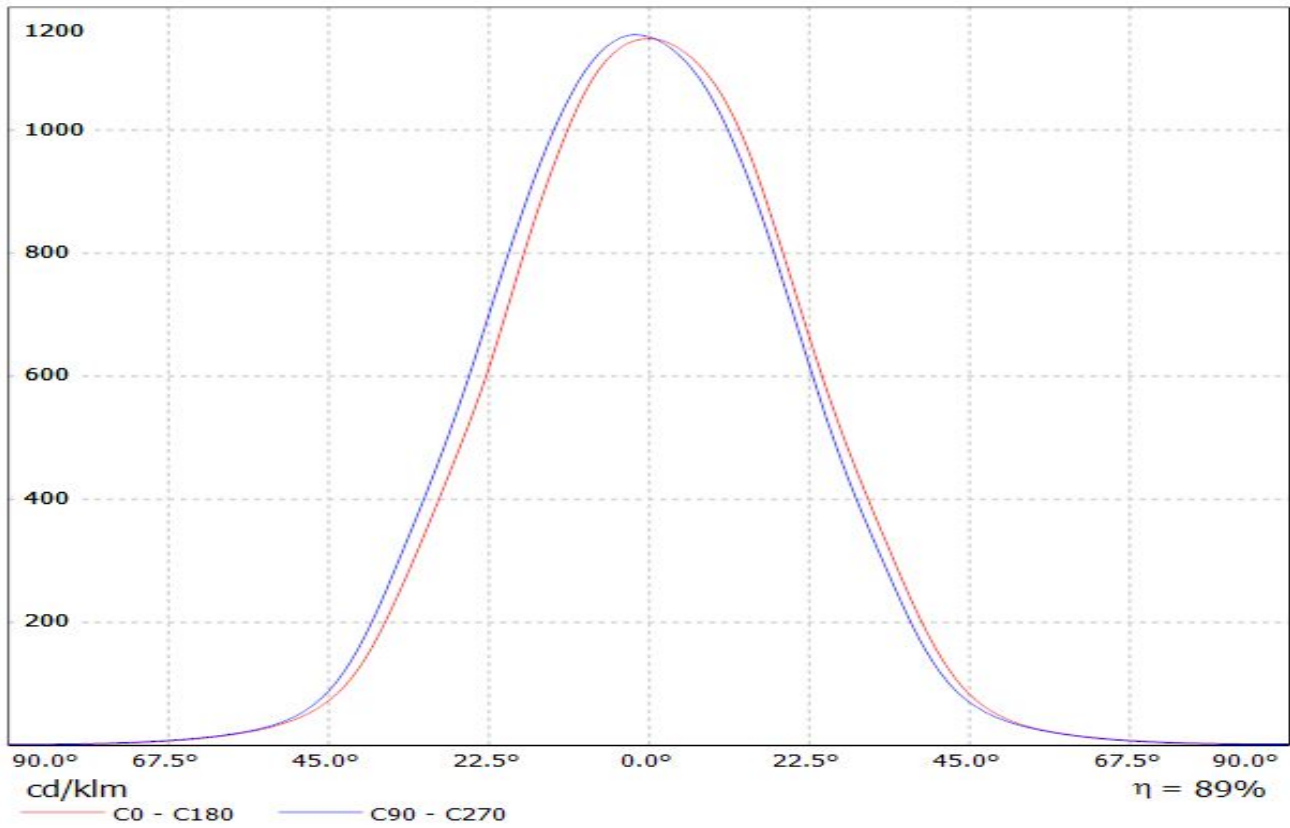
Lamps: 1 x Nichia NCSxx19B (NCSL119BE) 88lm @ 250mA CCT=3000K P=0.8W I=250mA



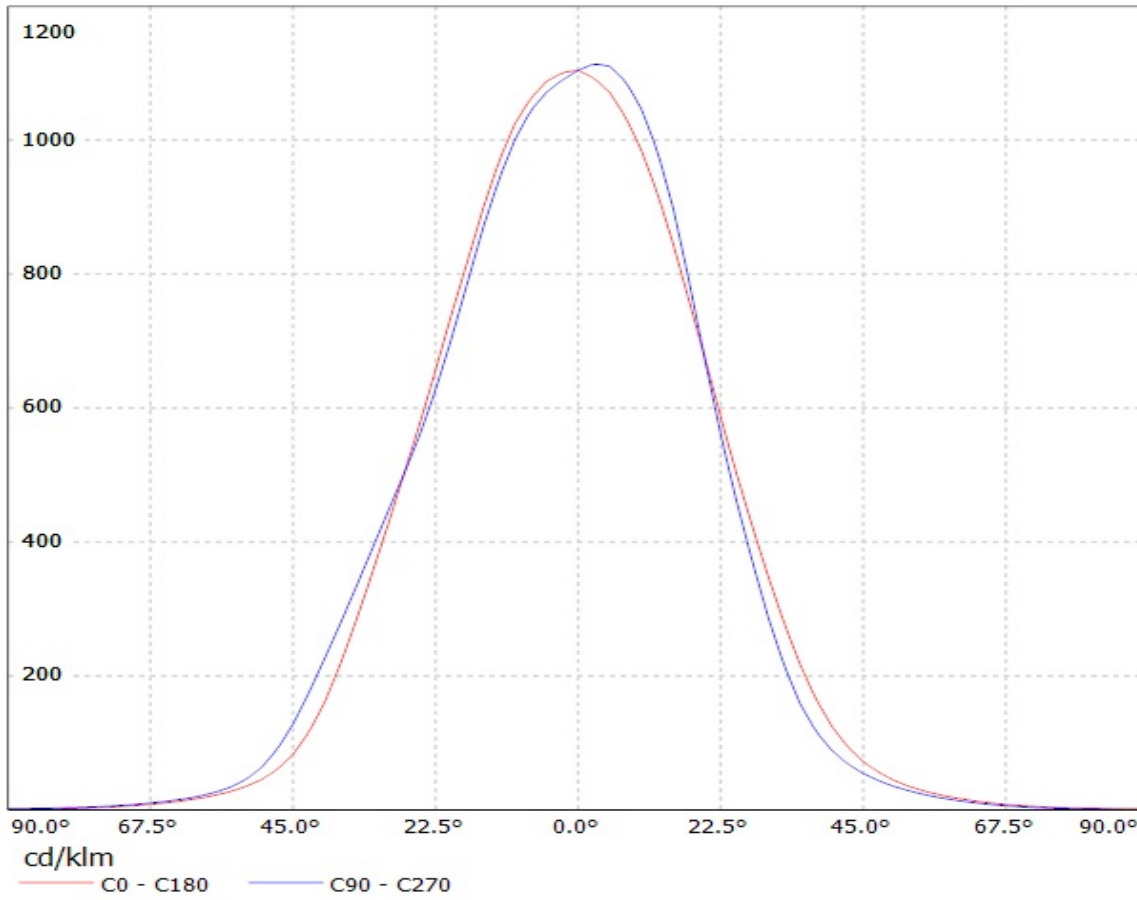
Luminaire: Ledil Oy FP13026&FP13029\_LISA2-WW\_PIN&CLIP (XP-E2) Eff. 88%  
Lamps: 1 x Cree XP-E2 cool white 92lm@250mA CCT=5600K P=0.75W I=250mA



Luminaire: LEDiL Oy FP13026&FP13029\_LISA2-WW\_(XP-G2) Eff. 89%  
Lamps: 1 x Cree\_(XP-G2) 104lm@250mA CCT=6600K P=0.76W I=250mA



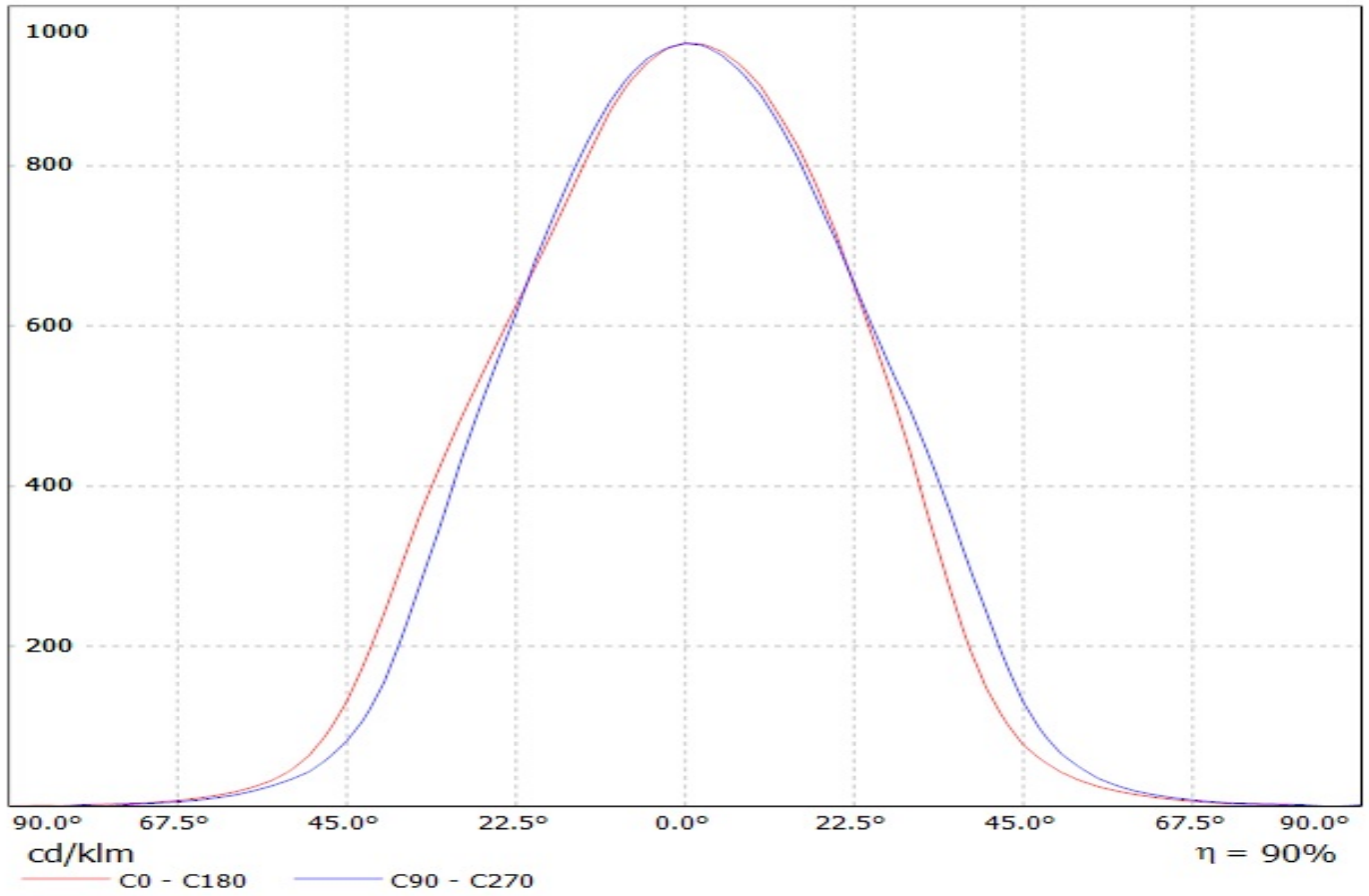
Luminaire: LEDIL OY FP13026\_LISA2-WW-PIN & FP13029\_LISA2-WW-CLIP-XTE (Cree XT-E 98lm @ 250mA) Efficiency=84%  
Lamps: 1 x CREE XT-E (98.9lm)





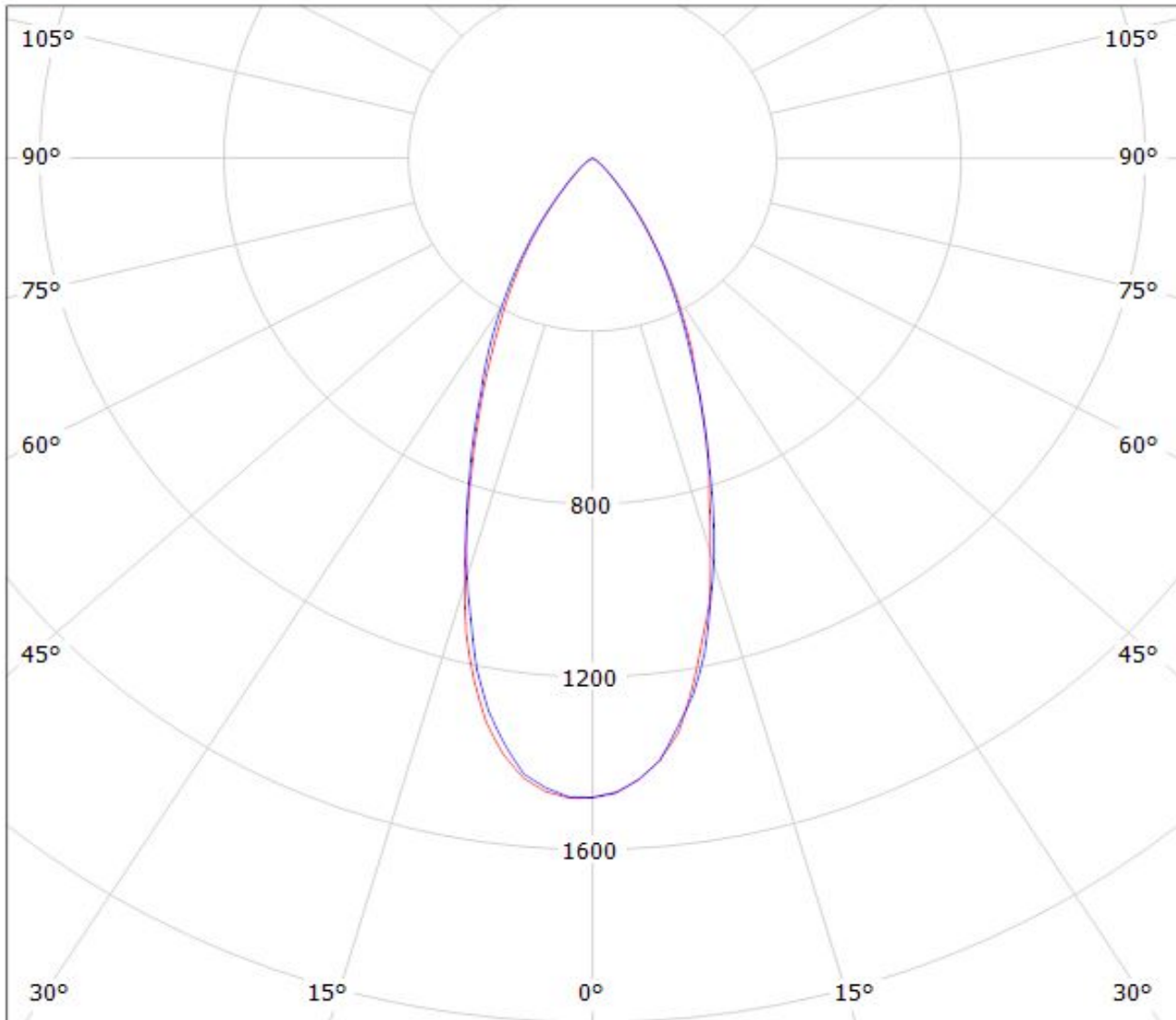
Luminaire: LEDil Oy FP13026\_LISA2-WW-PIN\_(LH351Z)

Lamps: 1 x Samsung LH351Z (90.14lm @ 250mA) CCT=6500K P=0.7W I=250mA

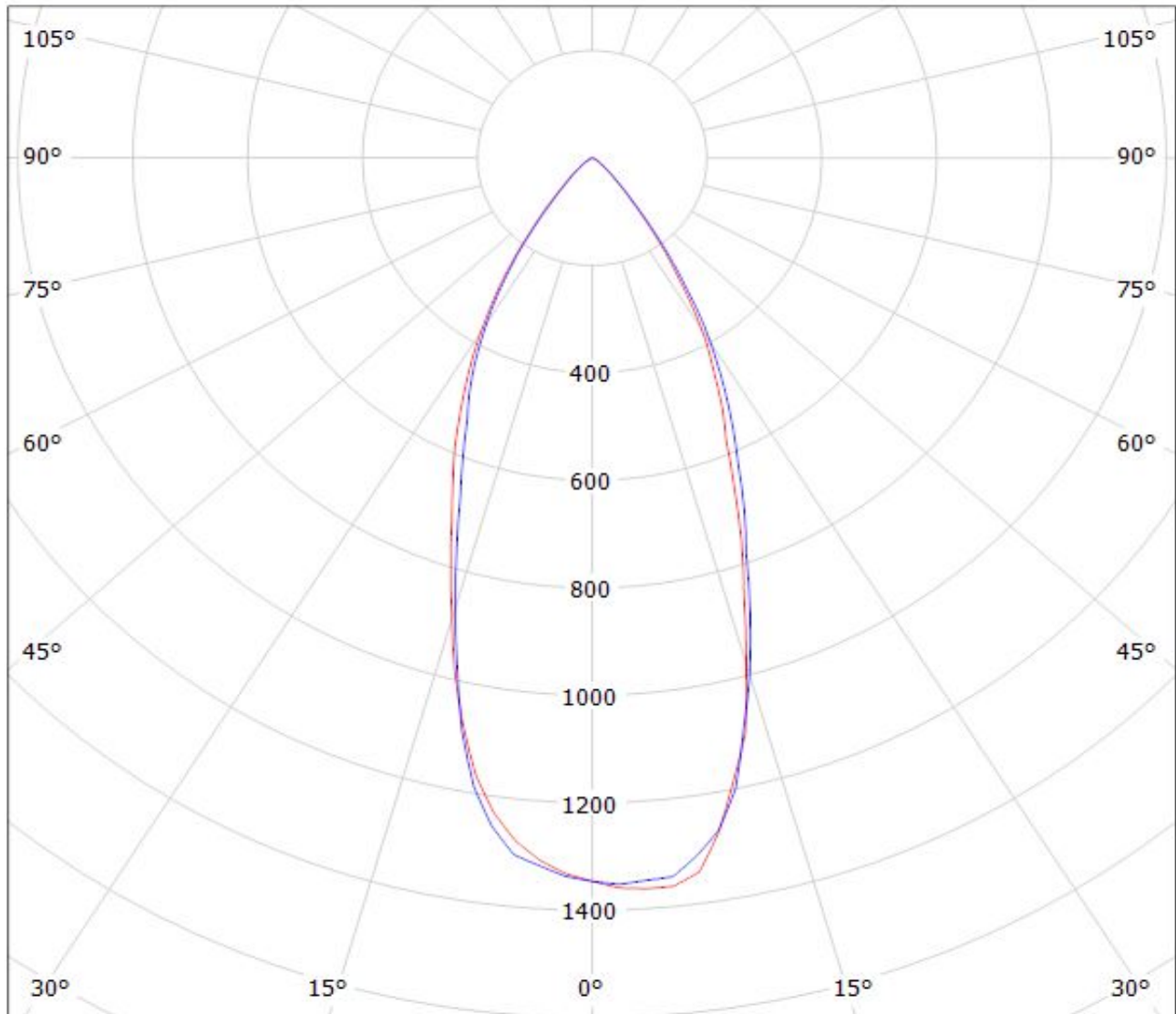


Luminaire: Ledil Oy FP13026&FP13029\_LISA2-WW-PIN\_(NCSxx19B) Eff. 86%

Lamps: 1 x Nichia NCSxx19B (NCSL119BE) 88lm @ 250mA CCT=3000K P=0.8W I=250mA



Luminaire: Ledil Oy FP13026&FP13029\_LISA2-WW\_PIN&CLIP (XP-E2) Eff. 88%  
Lamps: 1 x Cree XP-E2 cool white 92lm@250mA CCT=5600K P=0.75W I=250mA



cd/klm

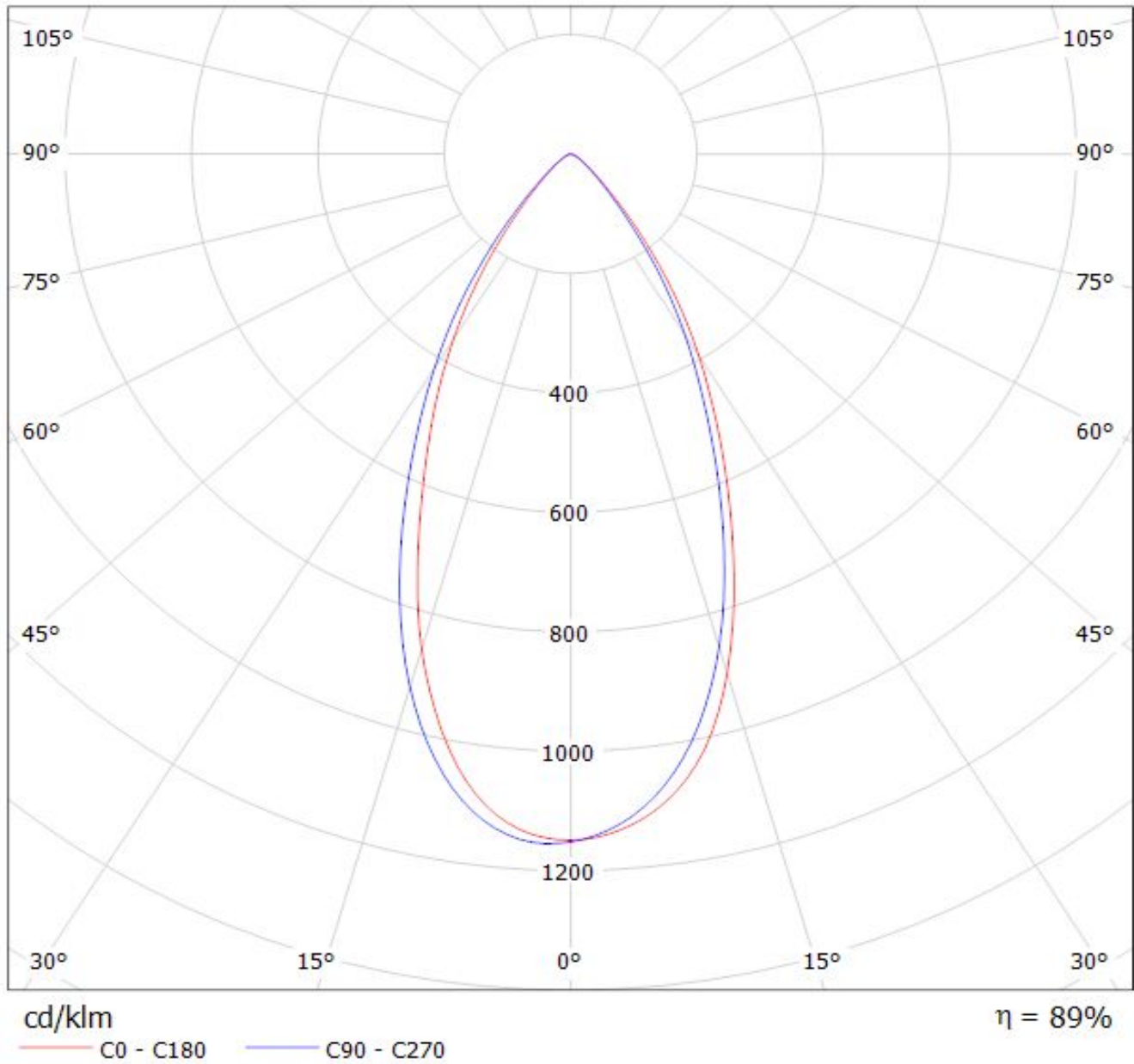
— C0 - C180

— C90 - C270

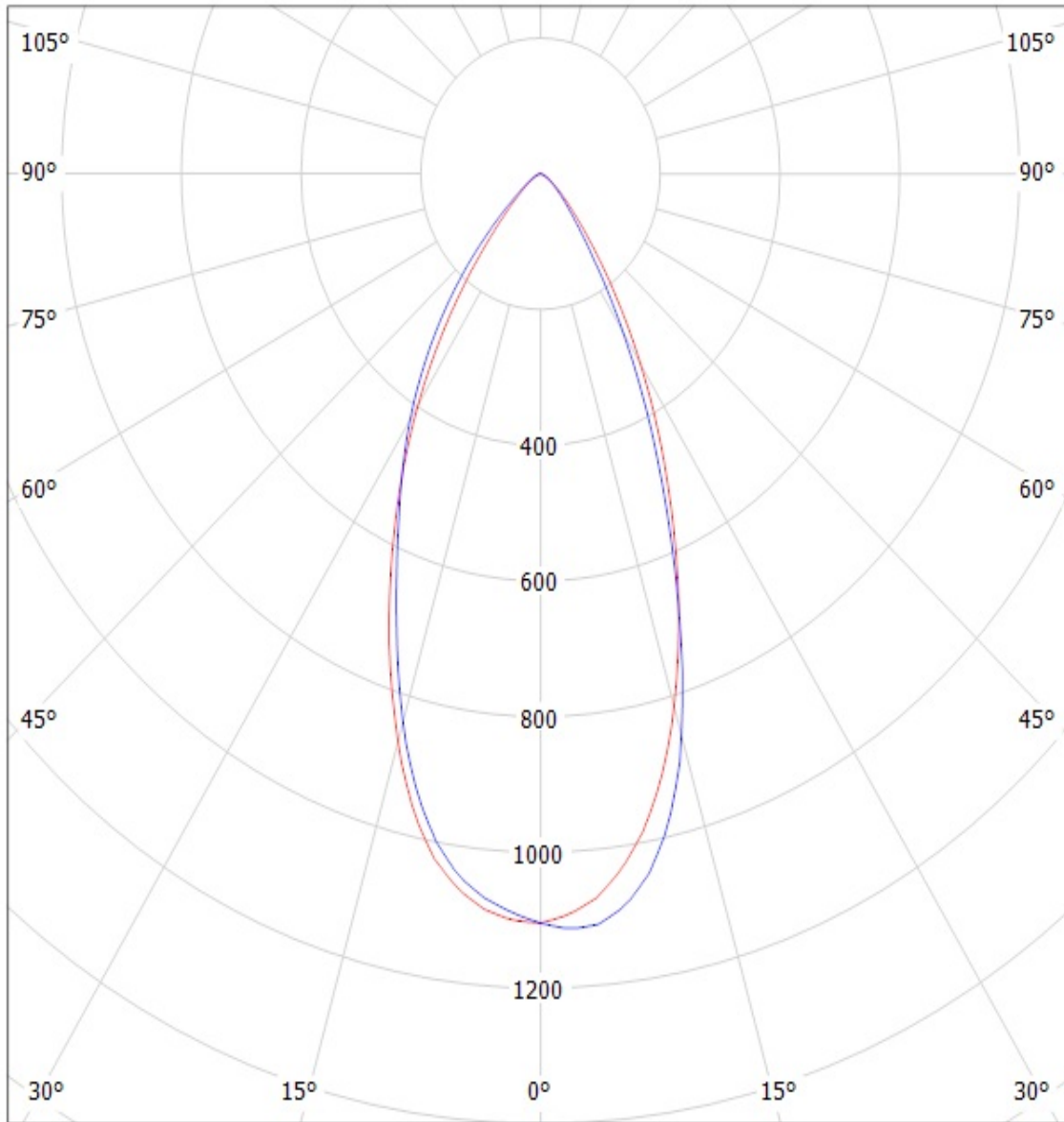
$\eta = 88\%$

Luminaire: LEDiL Oy FP13026&FP13029\_LISA2-WW\_(XP-G2) Eff. 89%

Lamps: 1 x Cree\_(XP-G2) 104lm@250mA CCT=6600K P=0.76W I=250mA



Luminaire: LEDIL OY FP13026\_LISA2-WW-PIN & FP13029\_LISA2-WW-CLIP-XTE (Cree XT-E 98lm @ 250mA) Efficiency=84%  
Lamps: 1 x CREE XT-E (98.9lm)

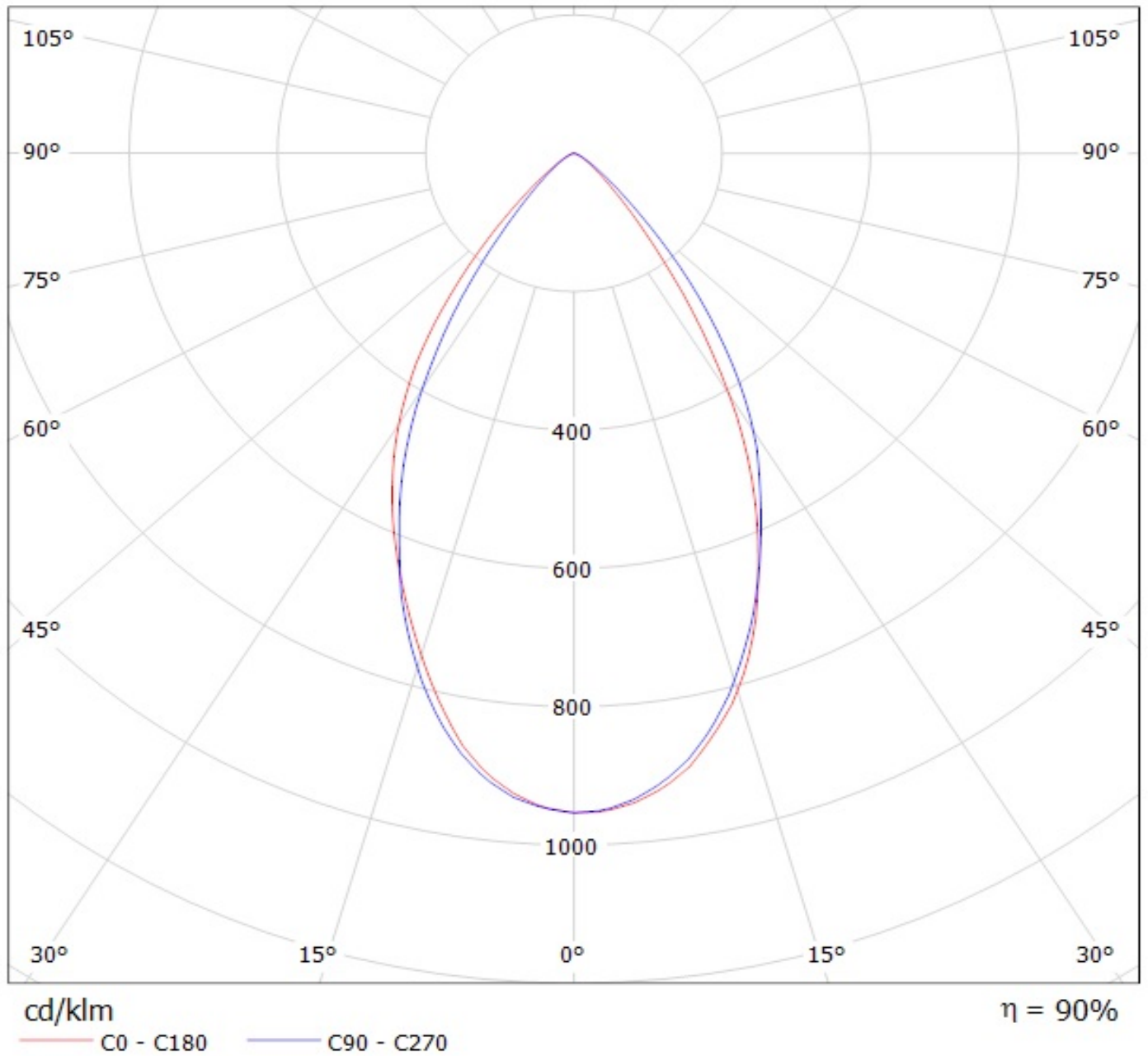


cd/klm

— C0 - C180    — C90 - C270

Luminaire: LEDil Oy FP13026\_LISA2-WW-PIN\_(LH351Z)

Lamps: 1 x Samsung LH351Z (90.14lm @ 250mA) CCT=6500K P=0.7W I=250mA



**NOTE: The typical divergence will be changed by different color, chip size and chip position tolerance. The typical total divergence is the full angle measured where the luminous intensity is half of the peak value.**