



LEDIL F'FORM OPTICS

Lily-SST50 reflector for Luminus SST50 LEDs



LUMINUS
www.luminus.com



- Specially designed for Luminus SST50 series of LEDs.
- Special care taken to make a uniform white or warm white illumination. Lenses work well with other colors, too.
- Lens material optical grade metallized PC. Allows use of high current and temperature conditions (130°C/220°F).
- Best available optical efficiency over 90%.
- Compact dimensions, for more information please check drawing at the bottom page.

LENS TYPES

| NAME | ORDERING CODE | FWHM Angle |
|-------------------|---------------------|------------|
| Lily-SST50 Spot | C10977 Lily-SST50-S | ±10° |
| Lily-SST50 Medium | C10978 Lily-SST50-M | ±15° |
| Lily-SST50 Wide | C10979 Lily-SST50-W | ±22.5° |

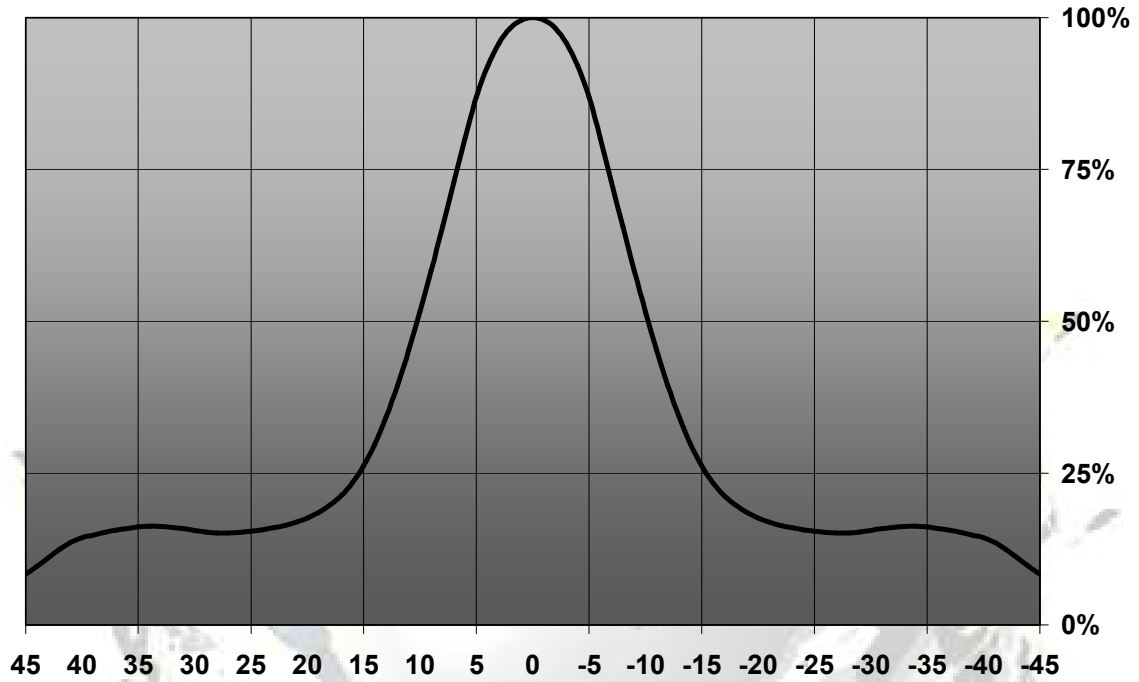
© Ledil Oy – PRELIMINARY - Subject to change without prior notice



LEDIL F'FORM OPTICS

MEASUREMENT DATA

Relative Intensity of C10977_Lily-SST50-S

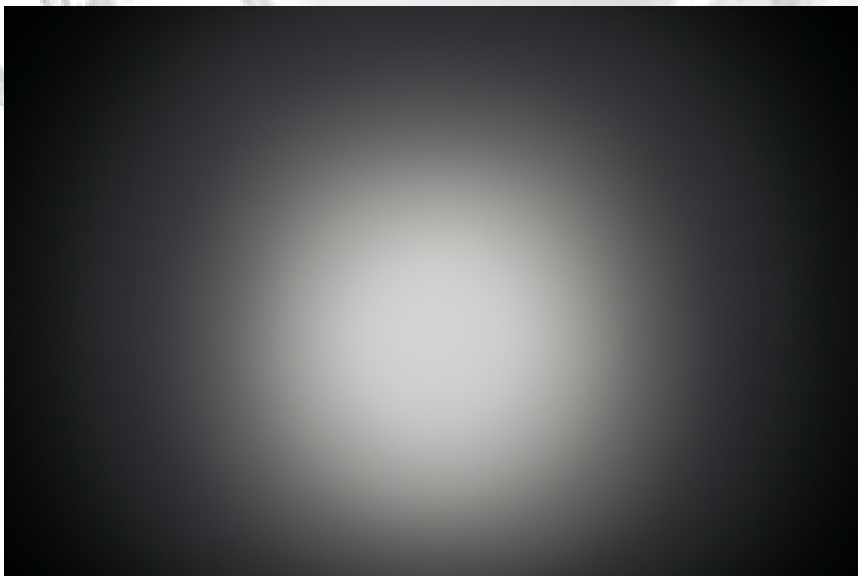
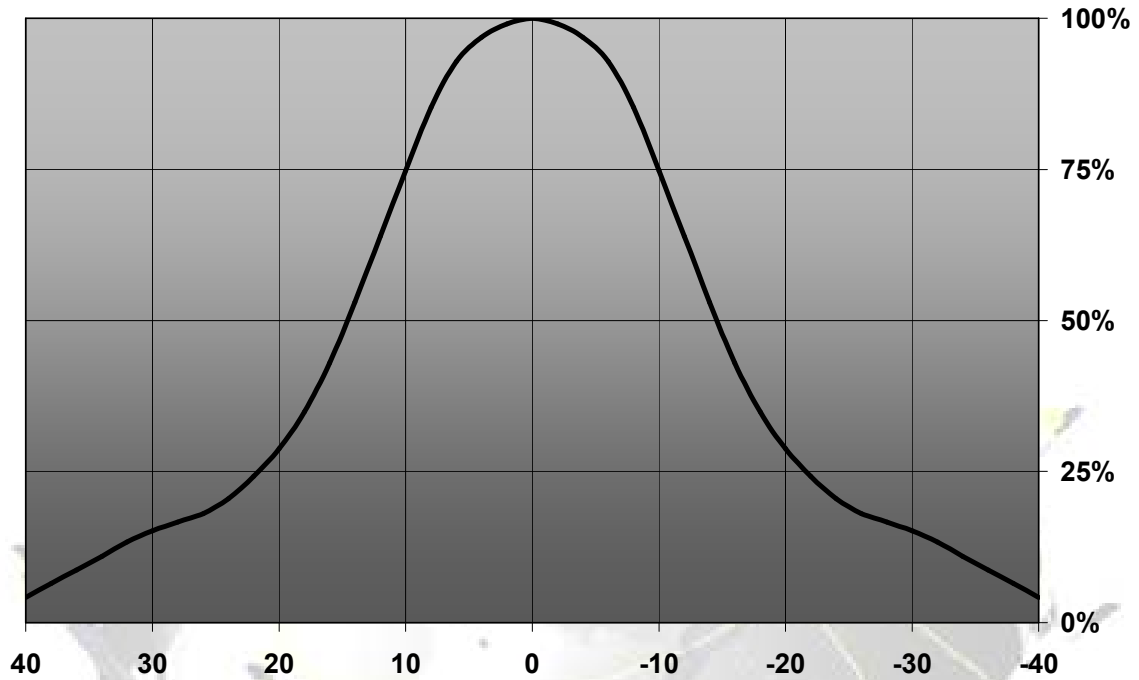


© Ledil Oy – PRELIMINARY - Subject to change without prior notice



LEDIL F'FORM OPTICS

Relative Intensity of C10978_Lily-SST50-M

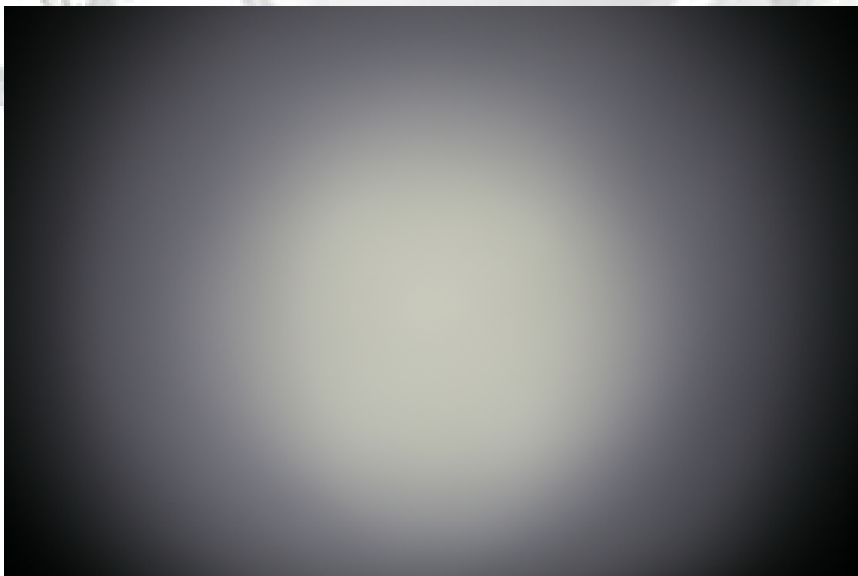
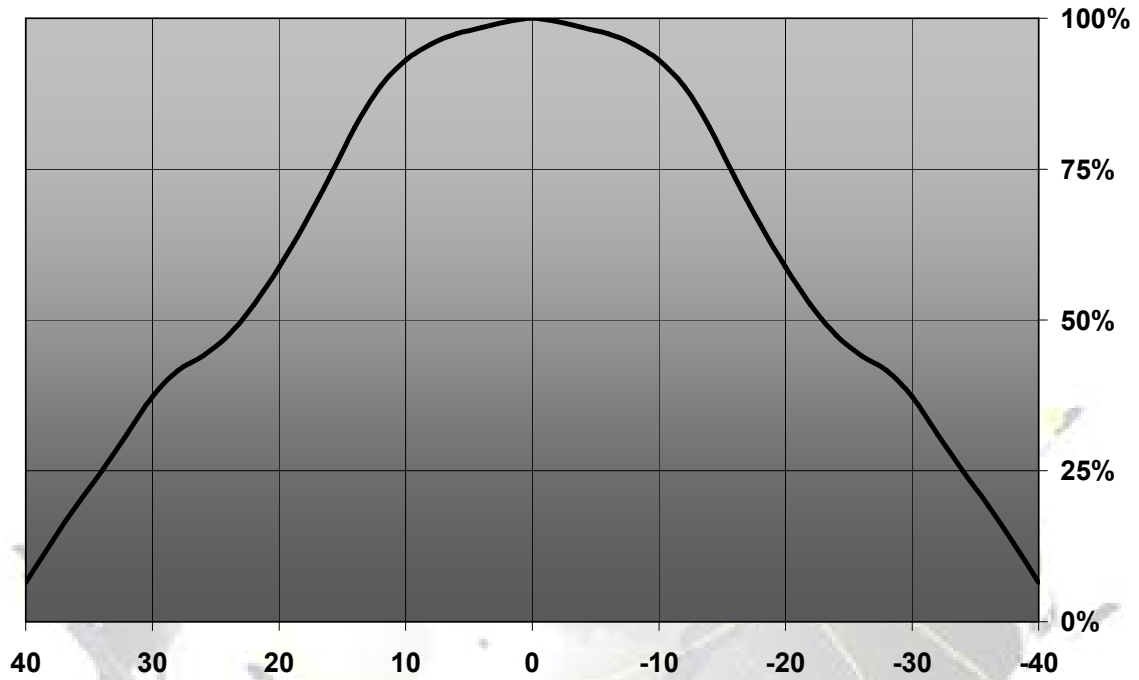


© Ledil Oy - PRELIMINARY - Subject to change without prior notice



LEDIL F'FORM OPTICS

Relative Intensity of C10979_Lily-SST50-W

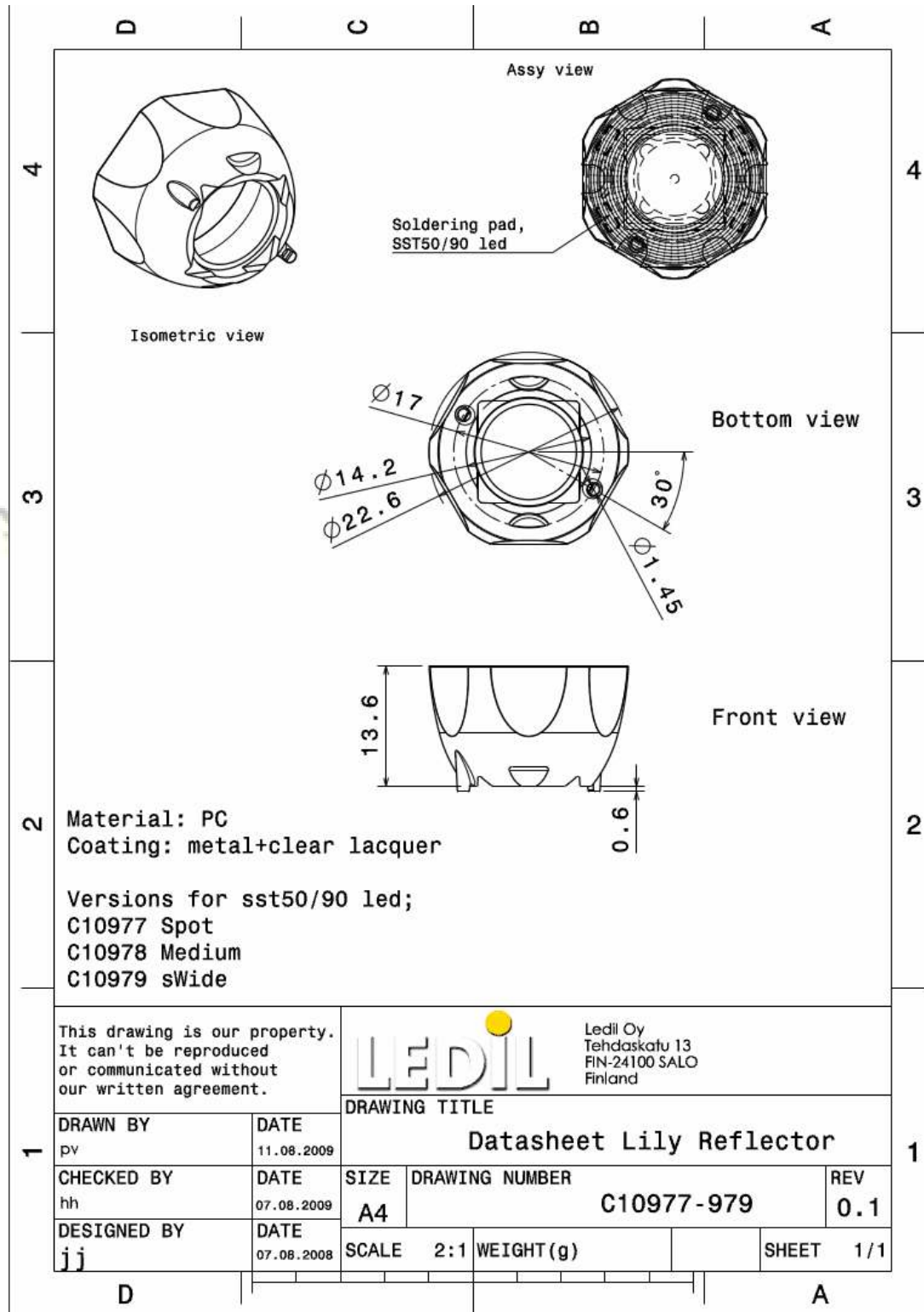


© Ledil Oy – PRELIMINARY - Subject to change without prior notice



LEDIL F'FORM OPTICS

DRAWINGS



© Ledil Oy - PRELIMINARY - Subject to change without prior notice