



## LEDIL F'FORM OPTICS

### Boomerang, reflector for LedEngin 5w & 10w LEDs



LedEngin, Inc.  
www.ledengin.com

- Specially designed for LedEngin 10w series of LEDs, but works also fine with LedEngin 5w LEDs.
- Special care taken to make a uniform white or warm white illumination. Lenses work well with other colors, too.
- Lens material optical grade metallized ABS. Allows use of high current and temperature conditions
- Best available optical efficiency, up to 90% using LedEngin 10w LEDs and using LedEngin 5w LEDs 89%.

### LENS TYPES

NAME	ORDERING CODE	FWHM Angle
BOOMERANG (with 10w LED)	C10437_Boomerang-reflector_LE10	$\pm 16^\circ \times \pm 16^\circ$
BOOMERANG (with 5w LED)	C10437_Boomerang-reflector_LE5	$\pm 14^\circ \times \pm 12^\circ$

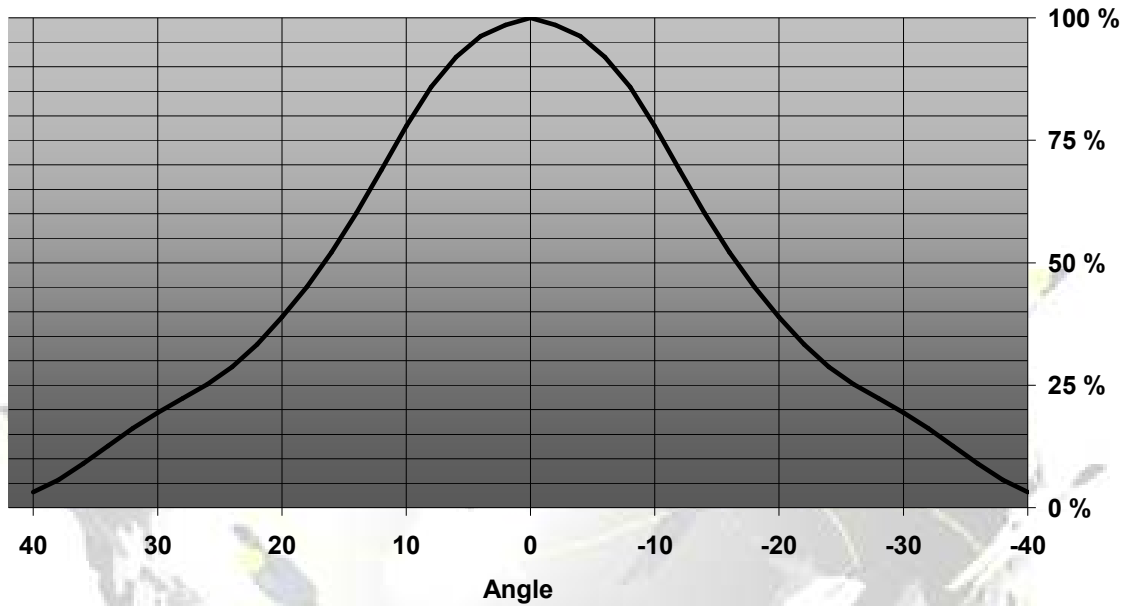
© Ledil Oy – PRELIMINARY - Subject to change without prior notice



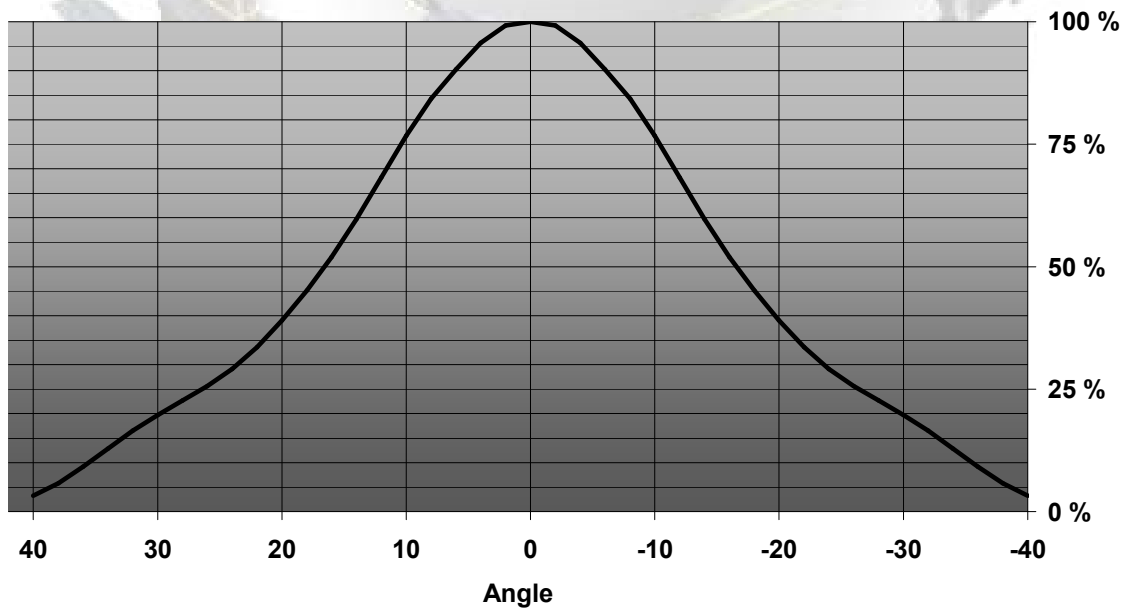
## LEDIL F'FORM OPTICS

### MEASUREMENT DATA

Boomerang reflector with LedEngin 10W LED (horizontal)



Boomerang reflector with LedEngin 10W LED (vertical)

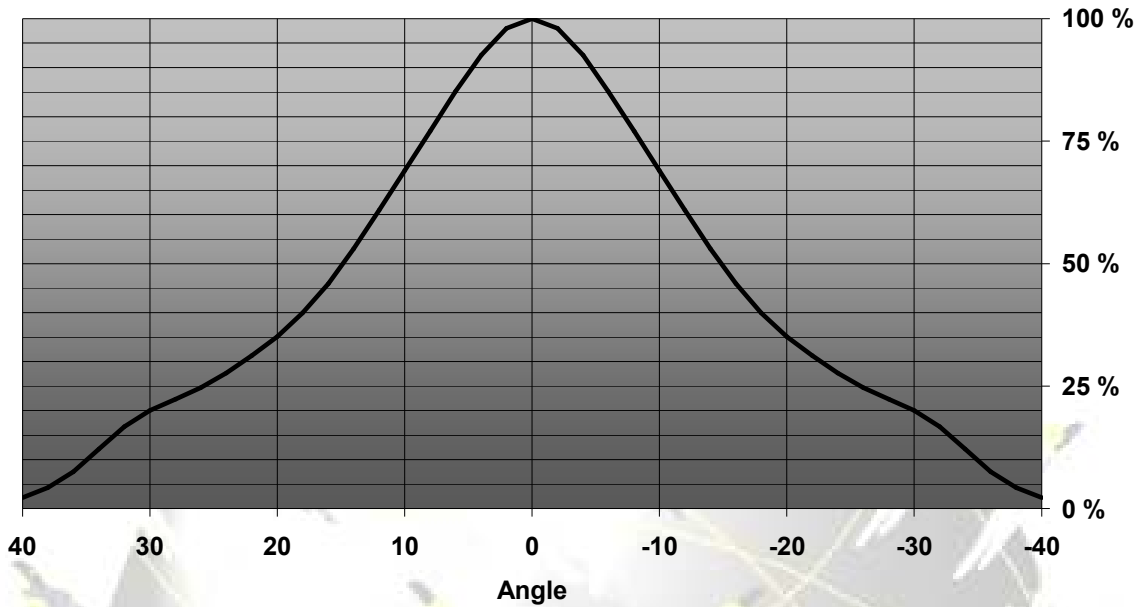


© Ledil Oy - PRELIMINARY - Subject to change without prior notice

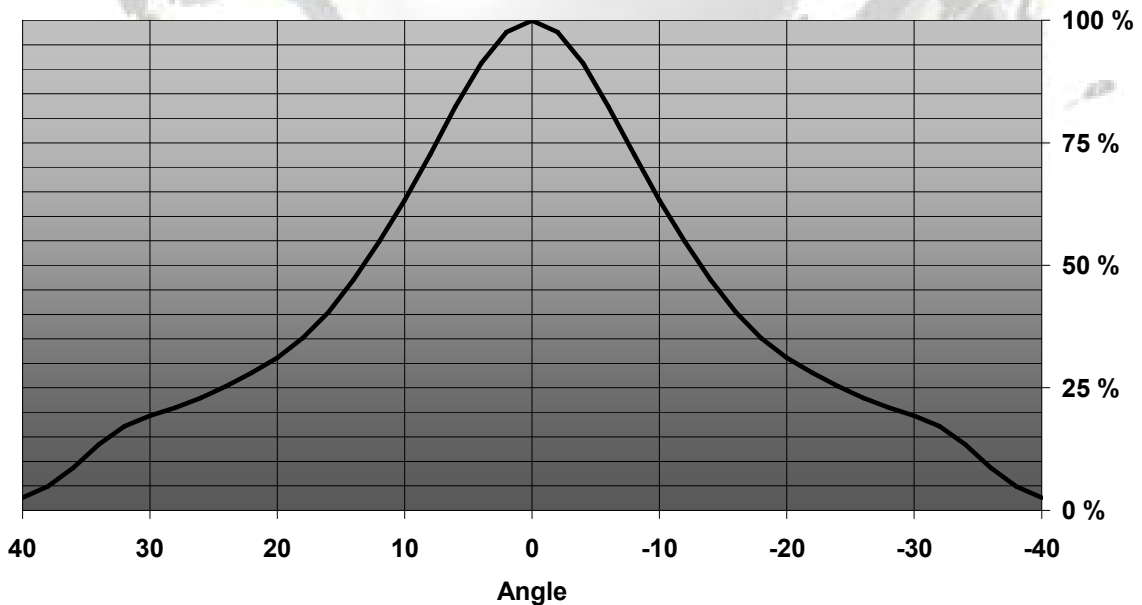


## LEDIL F'FORM OPTICS

Relative Intensity of Boomerang (LedEngin 5w horizontal)



Relative Intensity of Boomerang (LedEngin 5w vertical)



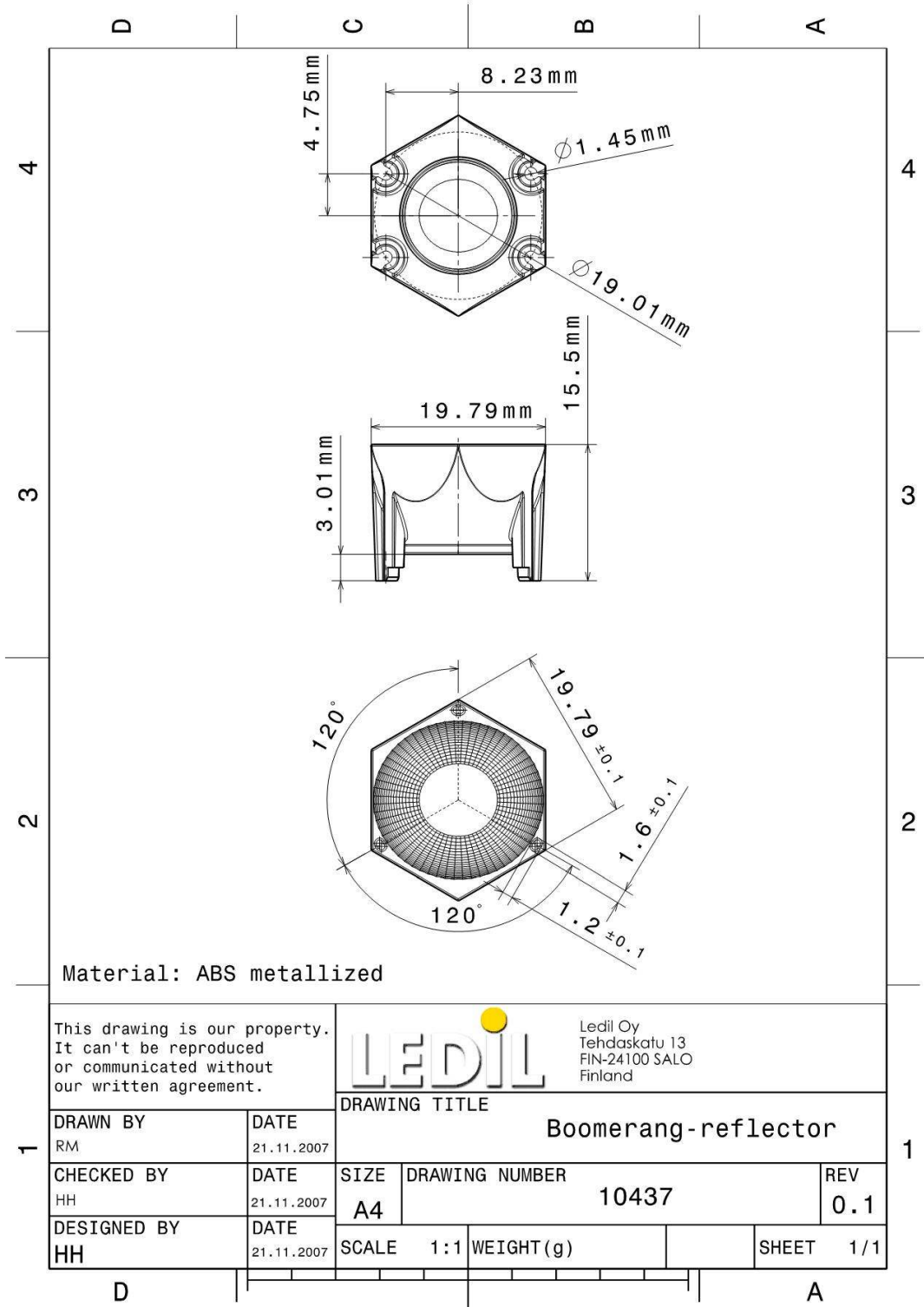
EULUMDAT & IES FILES AVAILABLE BY REQUEST

© Ledil Oy - PRELIMINARY - Subject to change without prior notice



**LEDIL F'FORM OPTICS**

**DRAWINGS**



© Ledil Oy – PRELIMINARY - Subject to change without prior notice



## LEDIL F'FORM OPTICS



---

© Ledil Oy – PRELIMINARY - Subject to change without prior notice

Ledil Oy  
Tehdaskatu 13  
FIN-24100 SALO, Finland

[www.ledil.com](http://www.ledil.com)  
email: [ledil@ledil.com](mailto:ledil@ledil.com)  
FAX: +358-2-733 8001

2009-12-01