



## LEDIL F'FORM OPTICS

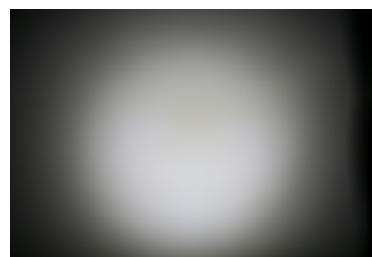
### Brooke reflectors for Bridgelux BXRA C/N/W-0800/1200/2000 series of LEDs



- Specially designed for Bridgelux BXRA-C/N/W- 0800/1200/2000 series of LEDs.
- Special care taken to make a uniform white or warm white illumination. Lenses work well with other colors, too.
- Very compact dimensions
- Lens material optical grade metallized PC. Allows use of high current and temperature conditions

### LENS TYPES

NAME	ORDERING CODE	FWHM Angle
Brooke Spot	CA11181_Brooke-S	±12°
Brooke Medium	CA11182_Brooke-M	±16°
Brooke Wide	CA11183_Brooke-W	±25°



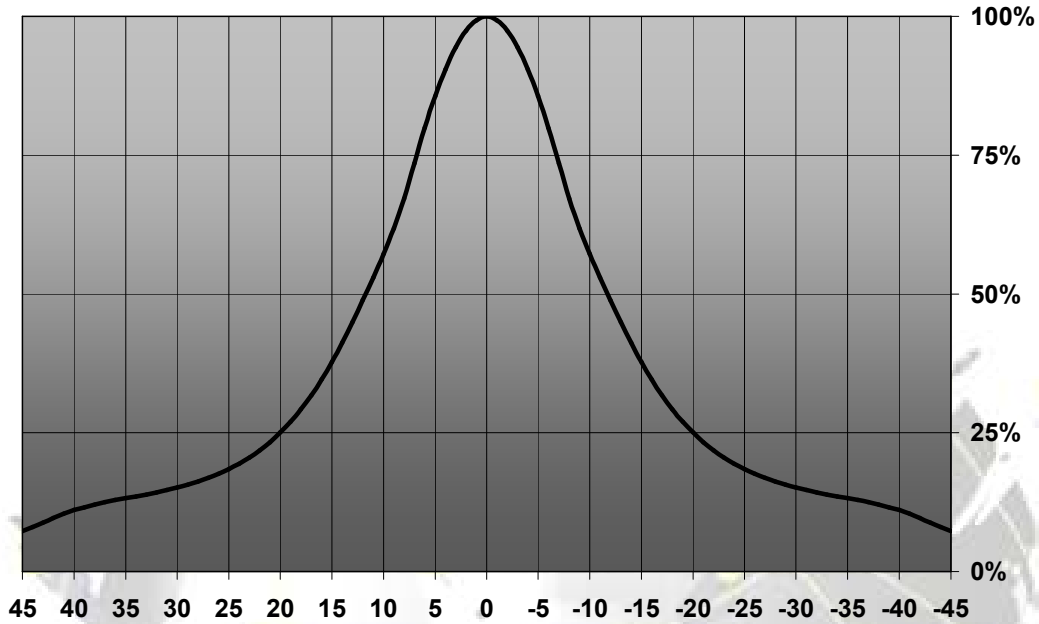
© Ledil Oy – PRELIMINARY - Subject to change without prior notice



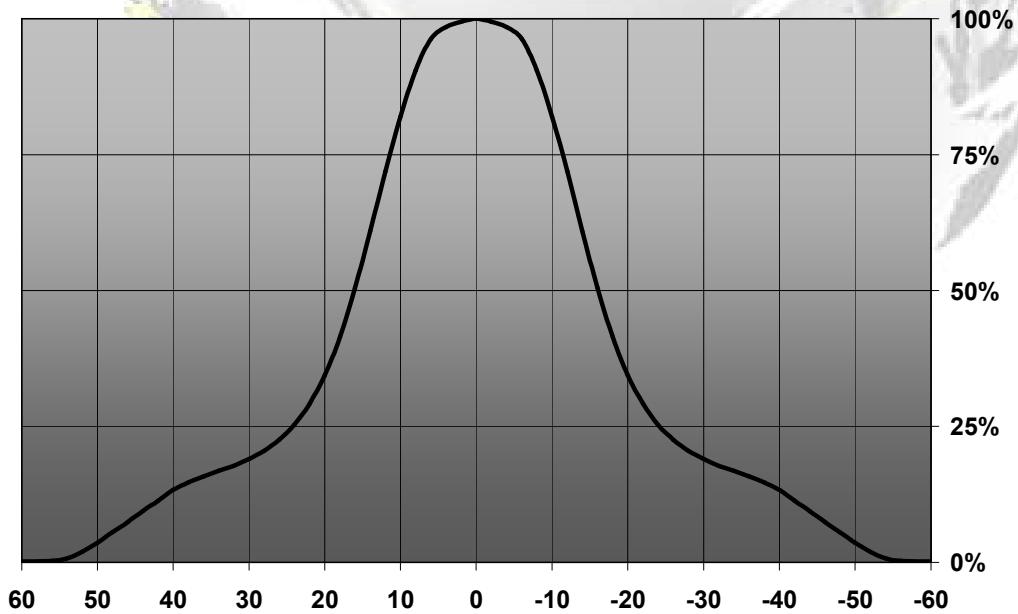
## LEDIL F'FORM OPTICS

### Measurement data

Relative Intensity of CA11181\_Brooke-S



Relative Intensity of CA11182\_Brooke-M

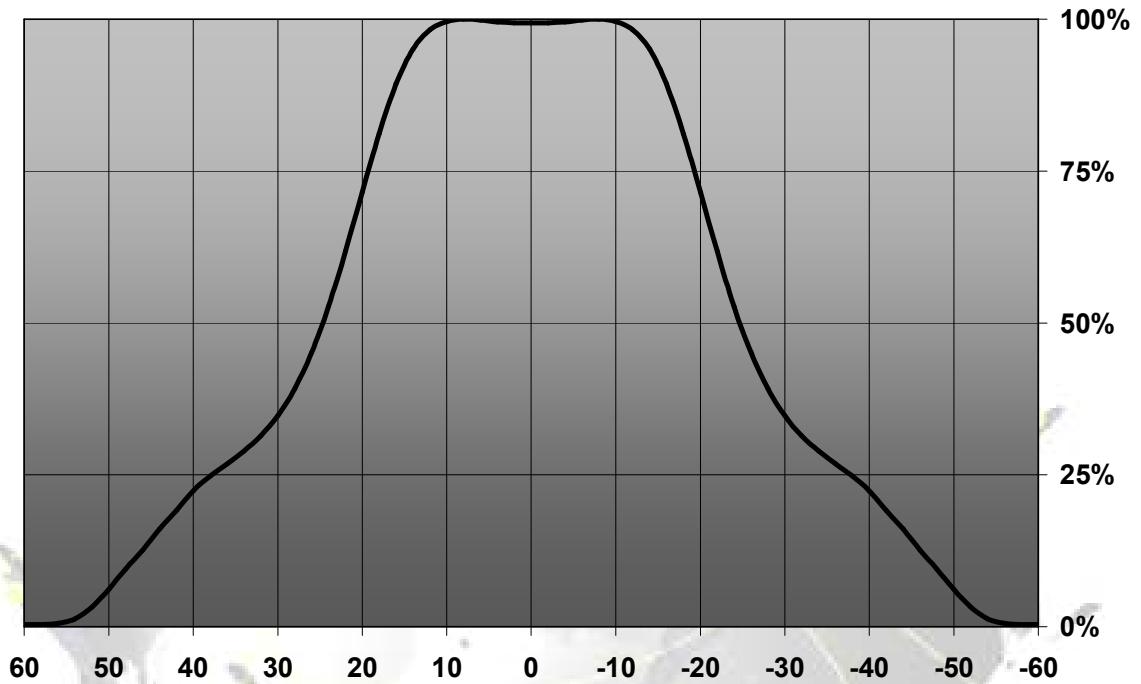


© Ledil Oy – PRELIMINARY - Subject to change without prior notice



## LEDIL F'FORM OPTICS

Relative Intensity of CA11183\_Brooke-W



EULUMDAT & IES FILES AVAILABLE BY REQUEST

© Ledil Oy – PRELIMINARY - Subject to change without prior notice

Ledil Oy  
Tehdaskatu 13  
FIN-24100 SALO, Finland

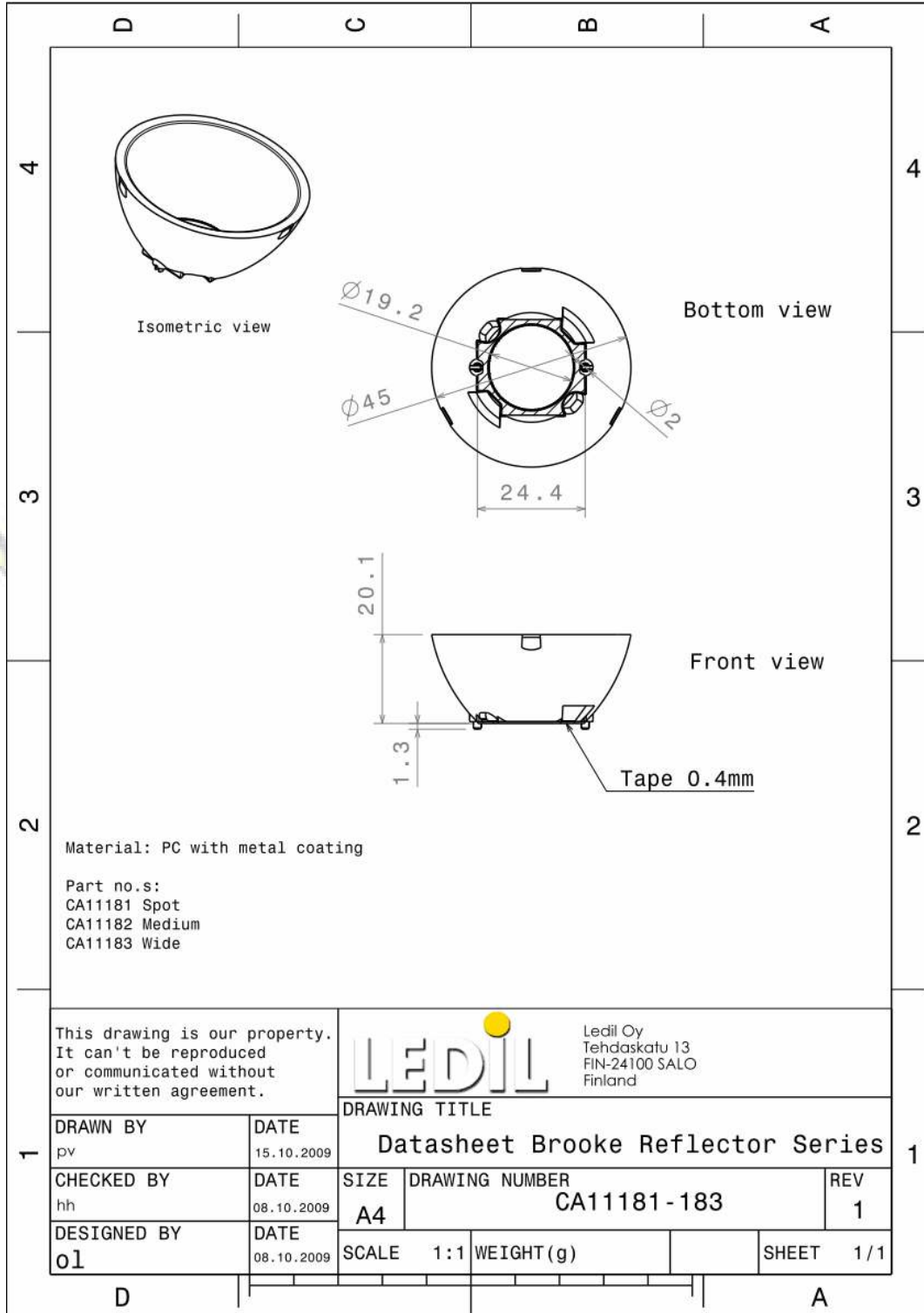
[www.ledil.com](http://www.ledil.com)  
email: [ledil@ledil.com](mailto:ledil@ledil.com)  
FAX: +358-2-733 8001

2009-12-03



**LEDIL F'FORM OPTICS**

**DRAWINGS**



© Ledil Oy - PRELIMINARY - Subject to change without prior notice