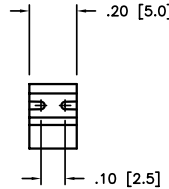
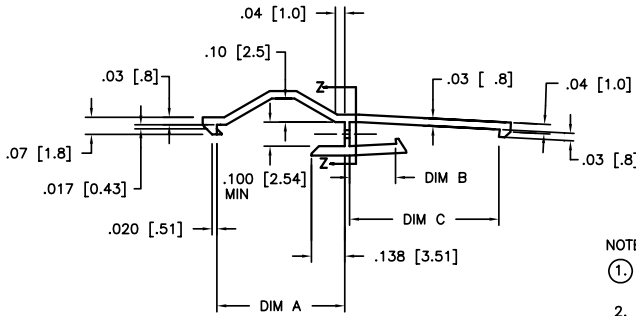




Copyright FCI

FCIconnect.com

PRODUCT NUMBER	DIM A	DIM B	DIM C	APPLICATION	NOTES
78242-001	.53/13.5	.191/4.85	.62/15.7	MINI LATCH TO CLINCHER	
78242-001LF	.53/13.5	.191/4.85	.62/15.7	MINI LATCH TO CLINCHER	NOTE 3
78242-002	.53/13.5	.157/4.00	.55/14.0	MINI LATCH RECEPTACLE TO MINI LATCH PIN	
78242-002LF	.53/13.5	.157/4.00	.55/14.0	MINI LATCH RECEPTACLE TO MINI LATCH PIN	NOTE 3
78242-003	.59/14.9	.191/4.85	.620/15.7	CLINCHER RECEPTACLE TO CLINCHER PIN	
78242-003LF	.59/14.9	.191/4.85	.620/15.7	CLINCHER RECEPTACLE TO CLINCHER PIN	NOTE 3



NOTES:

- ① MATERIAL: PBT, UNREINFORCED, FLAME RETARDANT PER UL94 V-0, COLOR: BLUE.
- ② ALWAYS APPLY LATCH TO PIN CONNECTOR FIRST TO FACILITATE ASSEMBLY.
- ③ PART NUMBERS WITH AN LF SUFFIX MEET EUROPEAN UNION DIRECTIVES AND OTHER COUNTRY REGULATIONS AS DESCRIBED IN GS-22-008.
- ④ THIS PRODUCT IS NOT INTENDED TO BE EXPOSED TO MANUFACTURING SOLDERING PROCESSES.

mat'l. code				surface		tolerance		projection		product family		
SEE NOTE 1				ASME Y14.5		ASME Y14.5		INCH/MM		BERGCON ACCESSORIES		
lit	ecp no	dr	date	tolerances unless otherwise specified				title				
C	V40999	HTB	1994-06-18	angles	30°±0.1/30±0.3			LATCH FOR FLYING CONNECTION SINGLE ROW				
D	V41244	HTB	1994-08-24		3000±0.05/3000±0.3							
E	V41721	MSC	1994-12-08	0°±2'	3000±0.020/3000±0.051	scale 2:1						
F	V50169	HTB	1995-01-20	dr	M.CLOUSER	1994-06-18		FCI		dwg no 78242 sheet 1 of 1 size A4		
G	V00492	RGD	2000-04-18	engr	T. HANNA	1994-06-18						
H	M06-0213	MHT	2006-06-05	chr	J.MURPHY	1994-06-18						
J	V06-1200	HTB	2006-12-18	appd	T.HANNA	1994-06-18						
sheet	revision			J								
index	sheet			1								