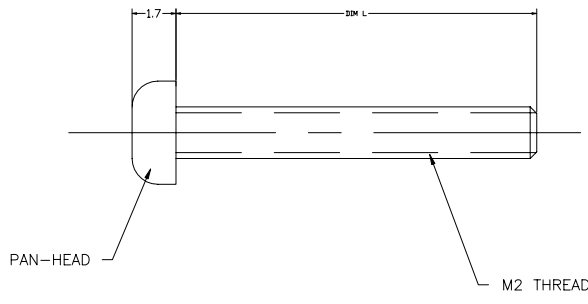
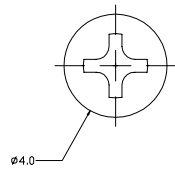


Tous droits strictement réservés. Reproduction ou communication à des tiers interdite sous quelque forme que ce soit sans autorisation écrite du propriétaire. Property of FCI. All rights reserved.



All rights strictly reserved. Reproduction or issue to third parties in any form without written authority from the proprietor. Property of FCI. Copyright FCI

PRODUCT NO.	DIM L	APPLICATION ④	STAND-OFF HEIGHT (mm)
95121-001	6	SINGLE DECK	0
95121-002	12	SINGLE DECK DOUBLE DECK	5 0
95121-003	14	DOUBLE DECK	2, 2.2
95121-004	8	SINGLE DECK	2, 2.2
95121-005	10	SINGLE DECK	4, 4.3
95121-006	16	DOUBLE DECK	4, 4.3
95121-007	18	DOUBLE DECK	5
95121-008	20	DOUBLE DECK	6



NOTES:

- ① MATERIAL: STEEL
- 2 PLATING: NICKEL OR ZINC
- 3 PACKAGING: BAGS OF 1,000
- ④ BASED ON .062in (1.57mm) PCB THICKNESS.
- 5 USE WITH HEX NUT 92869-001
- 6 THE P/N WITH "LF" SUFFIX IS LEAD FREE PART NUMBER
- 7 IF LEAD FREE P/N.THE PRODUCT MEETS EUROPEAN UNION DIRECTIVES AND OTHER COUNTRY REGULATIONS AS DESCRIBED IN GS-22-008
- 8 LEAD FREE P/N PACKAGING MEETS GS-14-920 SPECIFICATION

mat'l. code		NOTE 1		tolerances unless otherwise specified		CUSTOMER COPY		FCI Electronics	
ltr	ecn no	dr	date	linear	.XX±.13	projection	www.fciconnect.com		
D	V12164	TFG	8/17/01		.XXX±.051	MM	title M2 THREADED SCREW		
E	V20092	RGD	1/15/02	angles	0° ±2°	MM	product family	MCS	code -
F	N07-0109	DT	4/26/07			5:1	size	A4	95121
				dr	D.SHEAFFER 11/1/94		dwg no		sheet 1 of 1
				enr	D.BRANN 11/1/94				
				chr	D.BRANN 11/1/94				
				appd	D.BRANN 11/1/94				
sheet index	revision sheet	G	1						

ACAD

PDM: Rev:F

STATUS: Released

Printed: Jan 25, 2011