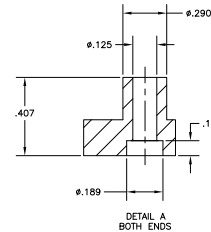
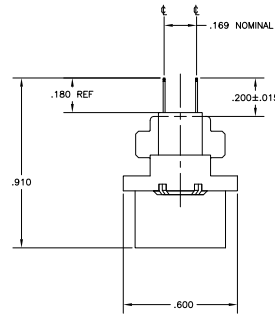
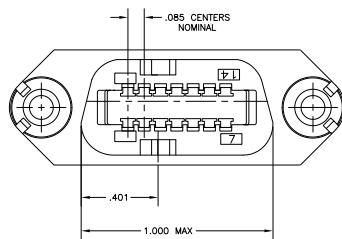
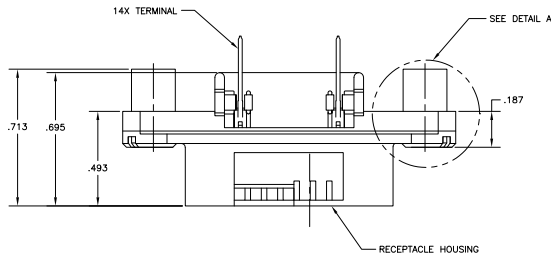
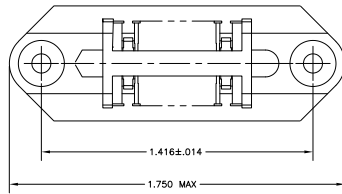


REV	DATE	REVISIONS
00		INITIALS
B		REVISED PER ECO-08-00787



1. THE CONTACT SURFACES OF THE TERMINALS ARE COATED WITH LUBRICANT.
- △ ALL DIMENSIONS SHOWN ARE FOR REFERENCE ONLY UNLESS OTHERWISE SPECIFIED.
- △ MATERIAL: HOUSING - THERMOPLASTIC, BLACK.  
TERMINAL - PHOS BRONZE PLATED WITH EITHER .000030 MINIMUM GOLD PLATE OR GOLD FLASH OVER PALLADIUM NICKEL PLATE. .000030 MINIMUM TOTAL ON MATING SURFACE. .000120 MINIMUM TIN PLATE ON TAILS OVER .000050 MINIMUM NICKEL UNDERPLATE OVER ENTIRE TERMINAL.

5552212-1  
PART NUMBER

THIS DRAWING IS A CONTROLLED DOCUMENT		<table border="1"> <tr> <td>DESIGNED BY</td> <td>DATE</td> </tr> <tr> <td>DRAWN BY</td> <td>DATE</td> </tr> <tr> <td>CHECKED BY</td> <td>DATE</td> </tr> <tr> <td>APPROVED BY</td> <td>DATE</td> </tr> </table>	DESIGNED BY	DATE	DRAWN BY	DATE	CHECKED BY	DATE	APPROVED BY	DATE	<table border="1"> <tr> <td>REVISED PER</td> <td>DATE</td> </tr> <tr> <td>BY</td> <td>DATE</td> </tr> </table>	REVISED PER	DATE	BY	DATE	<table border="1"> <tr> <td>DATE</td> <td>SCALE</td> </tr> <tr> <td>BY</td> <td>DATE</td> </tr> </table>	DATE	SCALE	BY	DATE
DESIGNED BY	DATE																			
DRAWN BY	DATE																			
CHECKED BY	DATE																			
APPROVED BY	DATE																			
REVISED PER	DATE																			
BY	DATE																			
DATE	SCALE																			
BY	DATE																			
<p>RECEPTACLE ASSEMBLY 14 POSITS VERTICAL MOUNTING, W/ STANDOFFS CHAMP-LOK</p>		<p>5552212-1</p>																		
<p>UNUSUAL</p>		<p>CUSTOMER DRAWING</p>																		