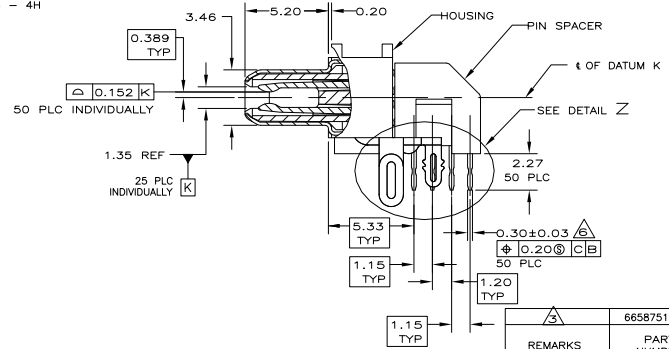


REV	DATE	BY	APP'D
B	08/JAN/2013	CJV	EDB

- △ HOUSING & PIN SPACER: THERMOPLASTIC, BLACK, UL 94V-0 RATED.
SHELL: CARBON STEEL.
CONTACTS: PHOSPHOR BRONZE.
BRACKETS: STEEL.
- △ SHELL: 5.08 μm MIN NICKEL OVER 2.54μm MIN COPPER.
CONTACTS: 0.76μm MIN GOLD ON MATING END, 3.75μm MIN TIN ON SOLDER TAILS, BOTH OVER 1.27μm MIN NICKEL ON ENTIRE CONTACT.
BRACKETS: TIN PLATED.
- △ CONTACTS DESIGNED FOR USE ON 1.60±0.15 THICK PC BOARD WITH PLATED THRU MOUNTING HOLES.
- △ RECEPTACLE ASSEMBLY DESIGNED FOR USE WITH 1.12±0.08 THICK PANEL.
- △ DATUMS AND DIMENSIONS ESTABLISHED BY CUSTOMER.
- △ POSITION TOLERANCE APPLIES AT CONTACT TIP ONLY.

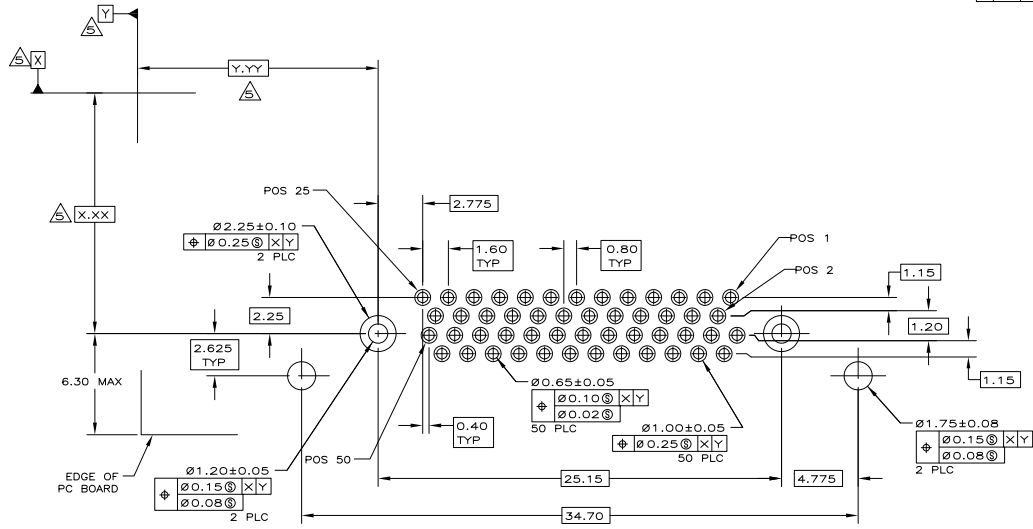


THIS DRAWING IS A CONTROLLED DOCUMENT. DIMENSIONING AND TOLERANCING PER ASME Y14.5M-2009		DWN: VARELA - DOCKES DES: SHUEY APD: M. WALMSLEY DATE: 08-01-09 DATE: 08-01-09	TE Connectivity RECEPTACLE ASSEMBLY, 50 POSITION, SHIELDED, RIGHT ANGLE, CHAMP 0.8mm
DIMENSIONS: 0 PLC ± - 1 PLC ± 0.13 2 PLC ± 0.13 3 PLC ± - 4 PLC ± - ANGLES ± 1°	TOLERANCES UNLESS OTHERWISE SPECIFIED: 0 PLC ± - 1 PLC ± 0.13 2 PLC ± 0.13 3 PLC ± - 4 PLC ± - ANGLES ± 1°	PRODUCT SPEC: - APPLICATION SPEC: - WEIGHT: - CUSTOMER DRAWING	SIZE: A2 CASE CODE: 00779 DRAWING NO: 6658751 SCALE: 6:1 SHEET: 1 of 2 REV: B

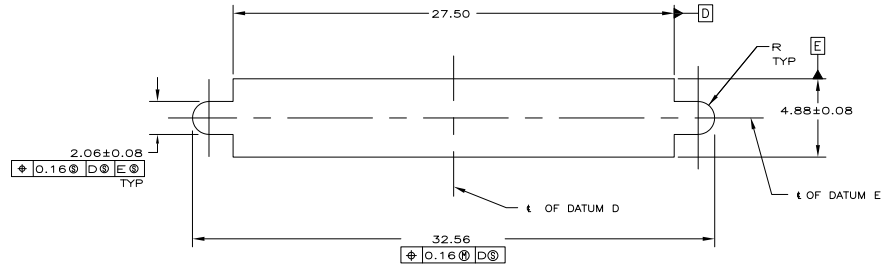
4 3 2 1

THIS DRAWING IS UNPUBLISHED. RELEASED FOR PUBLICATION. ALL RIGHTS RESERVED.

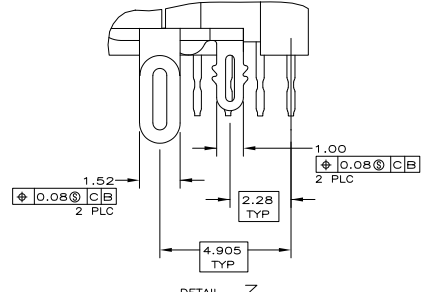
LOC	DIST	REVISIONS			
TR	LEN	DESCRIPTION	DATE	OWN	APPD
GP	00	SEE SHEET 1			



PC BOARD MOUNTING DIMENSIONS



PANEL CUT-OUT DIMENSIONS



DETAIL Z SCALE 10:1

THIS DRAWING IS A CONTROLLED DOCUMENT. DIMENSIONING AND TOLERANCING PER ASME Y14.5M-2009		DRN VARELA - 08-01-05	08-01-05	TE Connectivity
DIMENSIONS UNLESS OTHERWISE SPECIFIED:		CRS SHUEY - 08-01-05	08-01-05	
0 PLC	±	APD M. WALMSELY - 08-01-05	08-01-05	
1 PLC	±	PRODUCT SPEC		RECEPTACLE ASSEMBLY, 50 POSITION, SHIELDED, RIGHT ANGLE, CHAMP 0.8mm
2 PLC	± 0.13	APPLICATION SPEC		SIZE A2 CASE CODE 00779 DRAWING NO C=6658751 RESTRICTED TO
3 PLC	±			WEIGHT --
4 PLC	±			CUSTOMER DRAWING SCALE 6:1 SHEET 2 of 2 REV B
ANGLES	± 1°			
MATERIAL				
FINISH				